



Accelerators for the future

Ted Wilson

Rutherford, Lawrence, Cockcroft, Walton, Alvarez, Oliphant, MacMillan, Richter, R.R. Wilson, Wiik and Rubbia were physicists who, inspired by the goals of their own research, were stimulated to invent new acceleration techniques to achieve their ends. Modern physics has perhaps become too sophisticated now for individual imaginations to encompass both these creative activities. However, today's particle physicists will soon have to decide in which direction their research should lead them and make judgements on how they may be best served by future accelerators - whether future colliders should be linear or circular, whether energy or intensity is of greater importance - which particles: electrons, protons, muons or neutrinos are of greatest interest. The choice must depend on the practical and affordable limits to each kind of machine. This talk will provide enough insight into the theory and design of accelerators to enable particle physicists to appreciate the limits to one of these kinds of machine: the circular collider.

Starting from the parameters which determine the luminosity and physics performance of the LHC: energy, intensity, bunch structure and transverse beam size, we will explore the basic theory of phase stability, betatron motion, instabilities and beam-beam forces behind each of these parameters.

Author's e-mail: ted.wilson@cern.ch

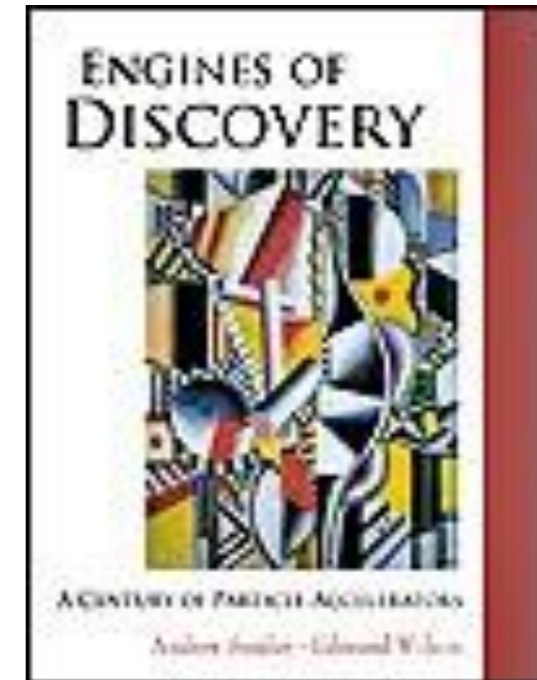
“Engines of Discovery”:

<http://www.worldscibooks.com/physics/6272.html>

<http://www.enginesofdiscovery.com>

“Particle Accelerators”

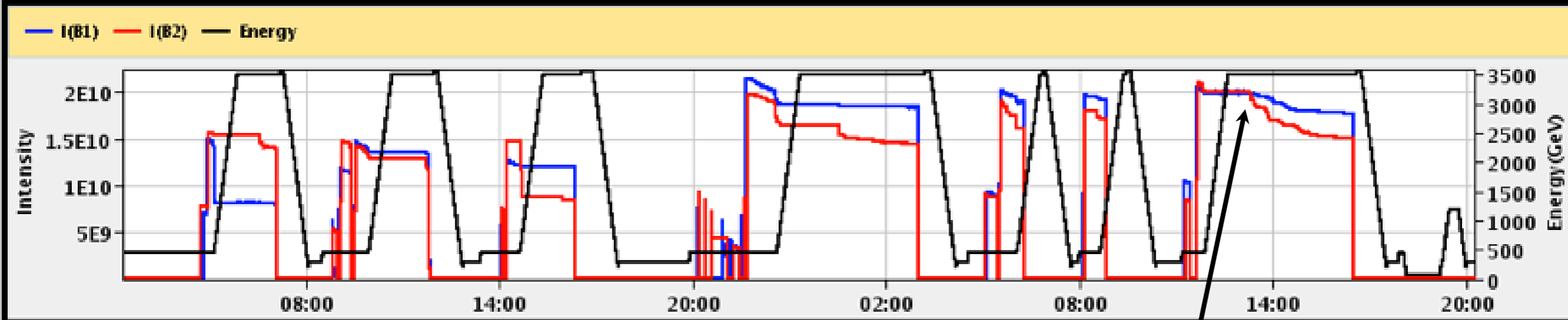
<http://www.oup.com/uk/catalogue/?ci=9780198508298>



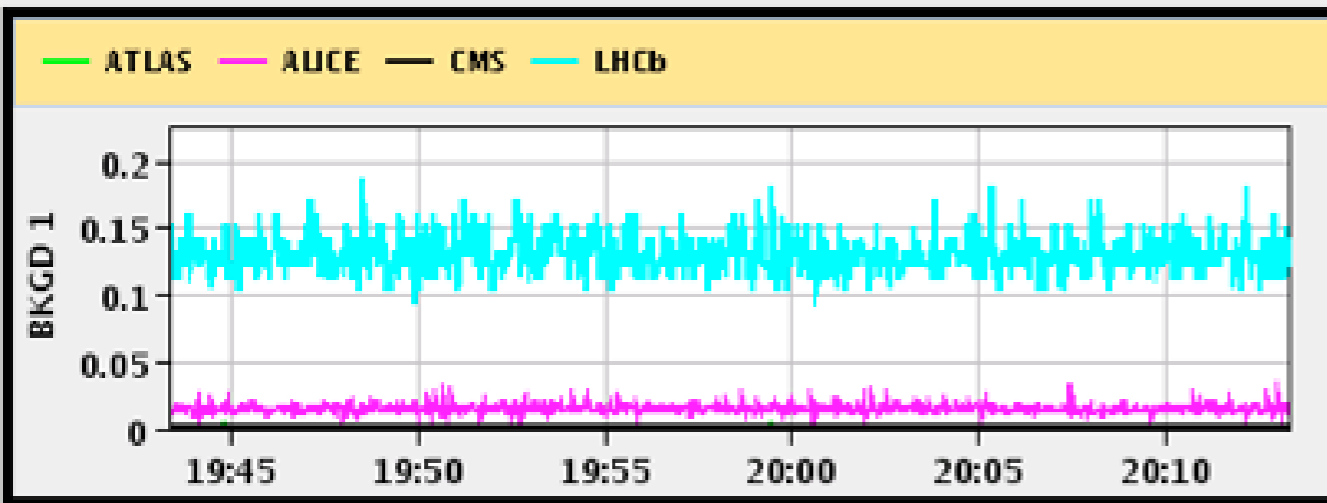
	ATLAS	ALICE	CMS	LHCb
Experiment Status	STANDBY	STANDBY	STANDBY	STANDBY
Instantaneous Luminosity	0.000e+00	0.000e+00	0.000e+00	0.000e+00
BRAN Count Rate	1.559e-01	2.818e-05	2.969e+00	2.732e-07
BKGD 1	0.002	0.013	0.002	0.122
BKGD 2	0.000	0.000	0.002	0.002
BKGD 3	0.000	0.005	0.003	0.040

LHCf **STANDBY** Count(Hz): 0.000 LHCb VELO Position **OUT** Gap: 58.0 mm TOTEM: **STANDBY**

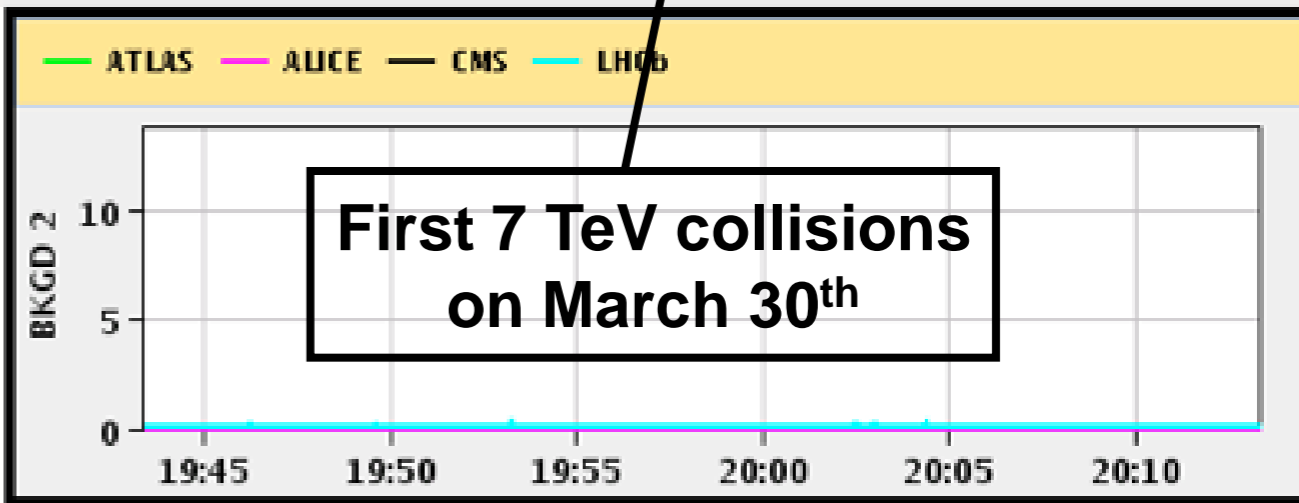
Performance over the last 12 Hrs



Background 1



Background 2



LHC design parameters

Nominal LHC parameters	
Beam injection energy (TeV)	0.45
Beam energy (TeV)	7.0
Number of particles per bunch	1.15×10^{11}
Number of bunches per beam	2808
Max stored beam energy (MJ)	362
Norm transverse emittance ($\mu\text{m rad}$)	3.75
Colliding beam size (μm)	16
Bunch length at 7 TeV (cm)	7.55

- These are the key parameters of a collider – the LHC
 - Why are they important for physics?
- What is the basic theory which limits each one of them?

What do experiments want?

High energy

High luminosity

B = bending field
 ρ = bending radius
 p = momentum
 e = charge

$$B\rho = \frac{p}{e}$$

Determined by the maximum field of bending dipoles, B

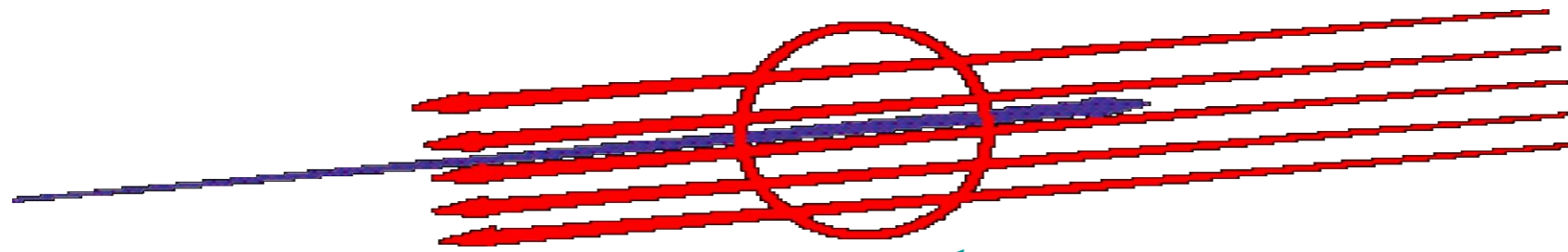
$$\mathcal{L} = \frac{N^2 n_b f_{\text{rev}}}{4\pi\sigma_x\sigma_y} F$$

N = bunch population
 n_b = number of bunches
 f_{rev} = revolution frequency
 $\sigma_{x,y}$ = colliding beam sizes
 F = geometric factor

Depends on machine parameters: charge per bunch (N), num. of bunches (n_b) and transverse beam sizes (σ)

*“Thus, to achieve high luminosity, **all one has to do is** make (lots of) high population bunches of low emittance to collide at high frequency at locations where the beam optics provides as low values of the amplitude functions as possible.”*

Luminosity (single bunches)



- Imagine a blue particle colliding with a beam of cross section area - A
- Probability of collision for an interaction is $\frac{\sigma}{A} \cdot N$
- For N particles in both beams $\frac{\sigma}{A} \cdot N^2$
- Suppose they meet f times per second at the revolution frequency

$$f_{rev} = \frac{\beta c}{2\pi R}$$

- Event rate

$$\frac{f_{rev} N^2}{A} \cdot \sigma$$

Make big

e.g. 10^{-25}

Make small

LUMINOSITY

$$\approx 10^{30} \text{ to } 10^{34} \text{ [cm}^{-2} \text{ s}^{-1}\text{]}$$



Luminosity is constrained by beam-beam forces.



With k bunches per beam and a round beam

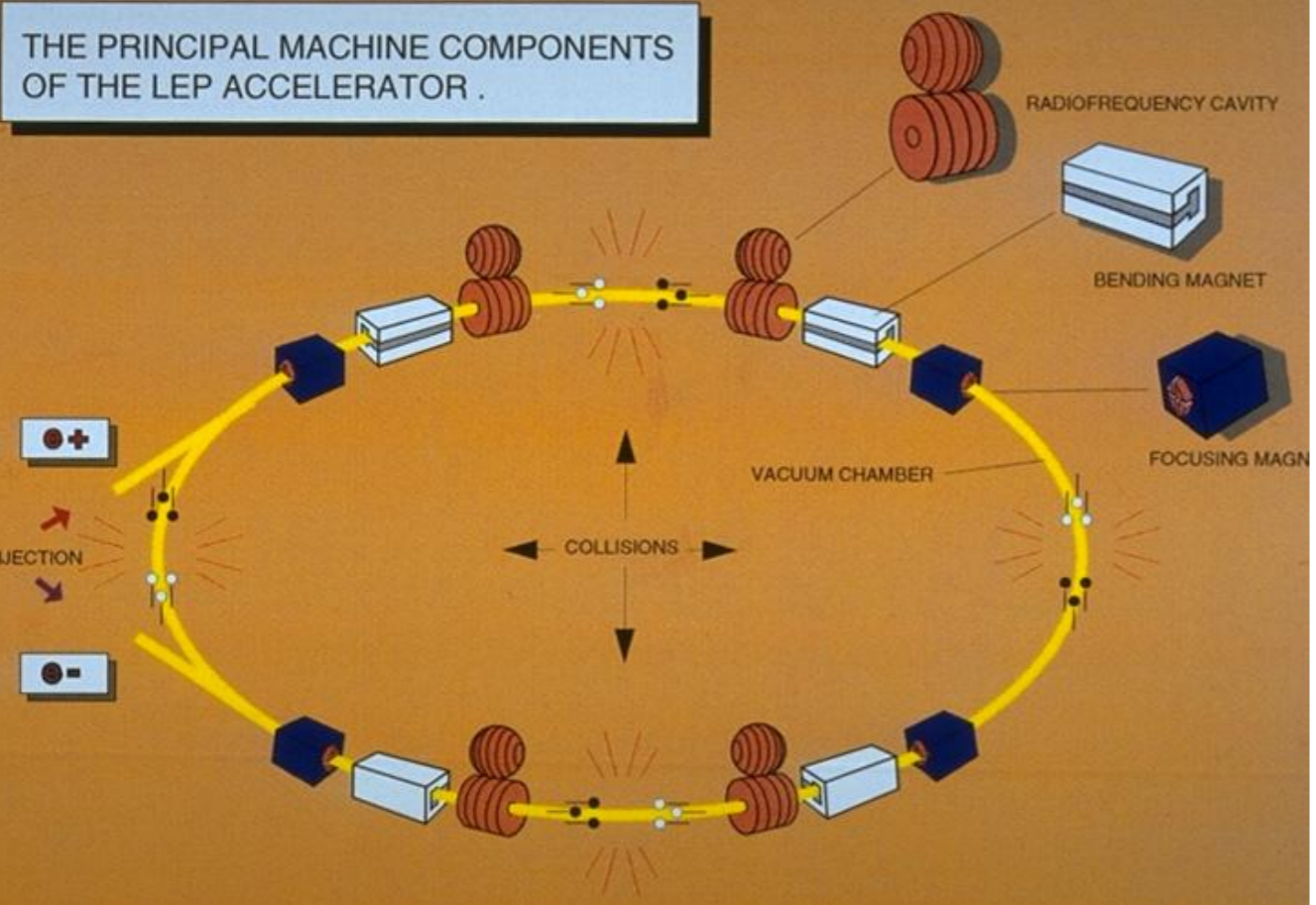
$$L = \frac{N^2 f k}{4\pi\gamma\sigma^2}$$

There is also a limit to performance called the linear beam-beam limit:

$$\Delta Q = \frac{\beta^* N r_0}{4\pi\gamma\sigma^2}$$

They have common parameters

I must now digress to explain β^* and Q



Charged particles are accelerated, guided and confined by **electromagnetic fields**.

- Bending: Dipole magnets
- Focusing: Quadrupole magnets
- Acceleration: RF cavities

In synchrotrons, they are ramped together synchronously to match beam energy.

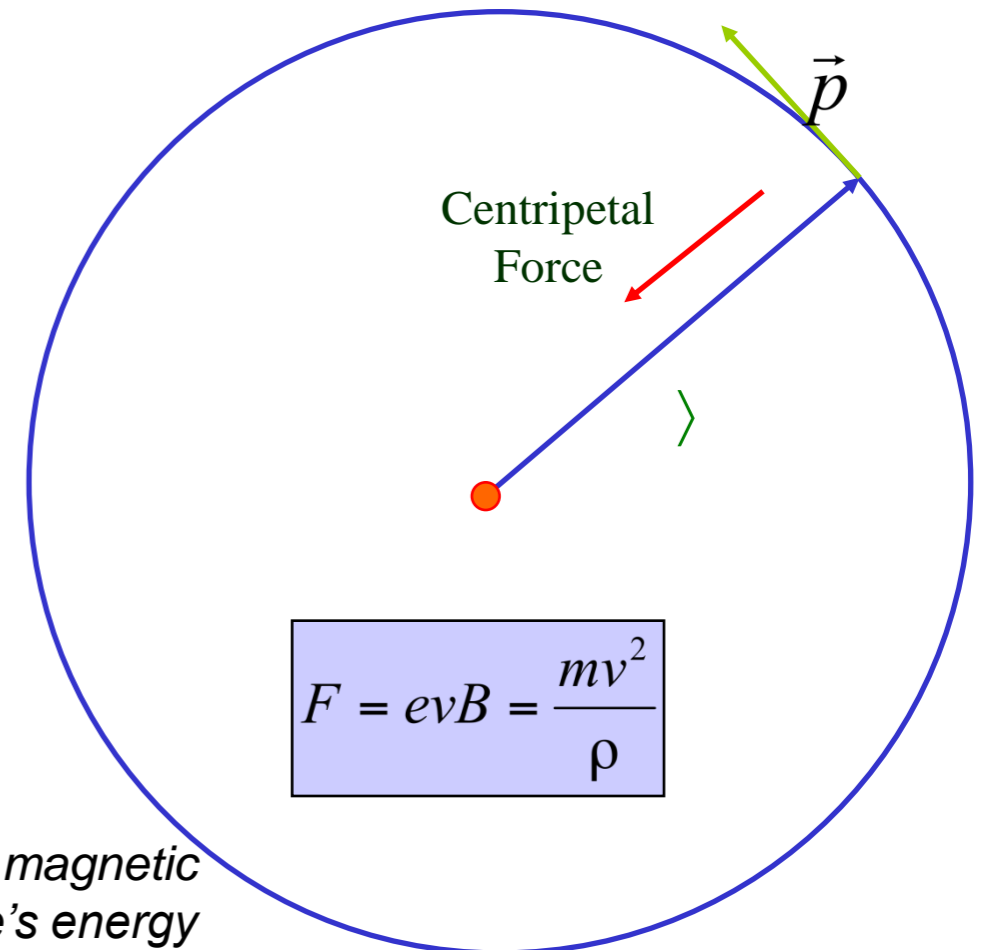
- Chromatic aberration: Sextupole magnets

Lorentz force

$$\vec{F} = e(\vec{v} \times \vec{B} + \vec{E})$$

Magnetic rigidity

$$B\rho = \frac{mv}{e} = \frac{p}{e}$$

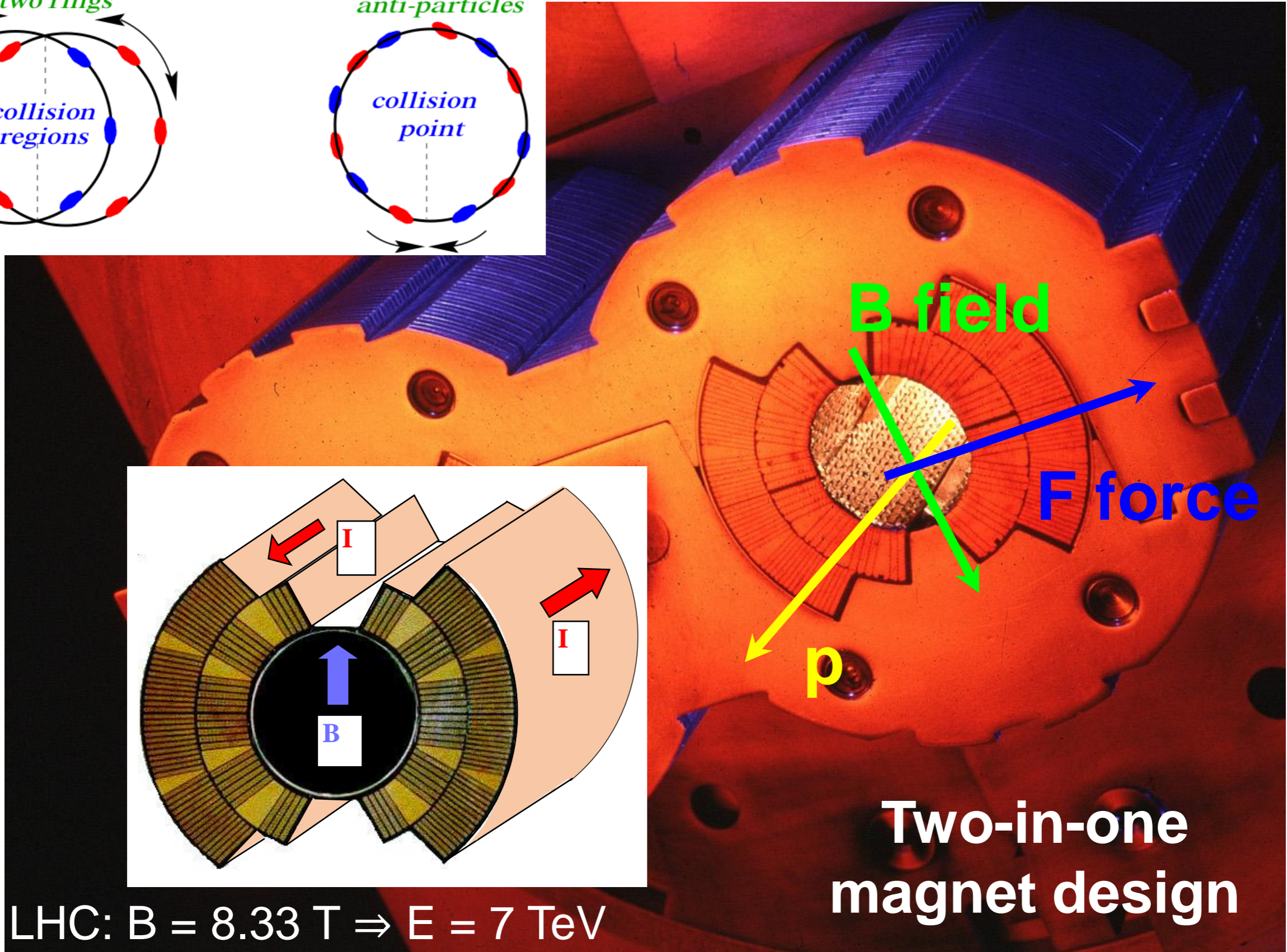
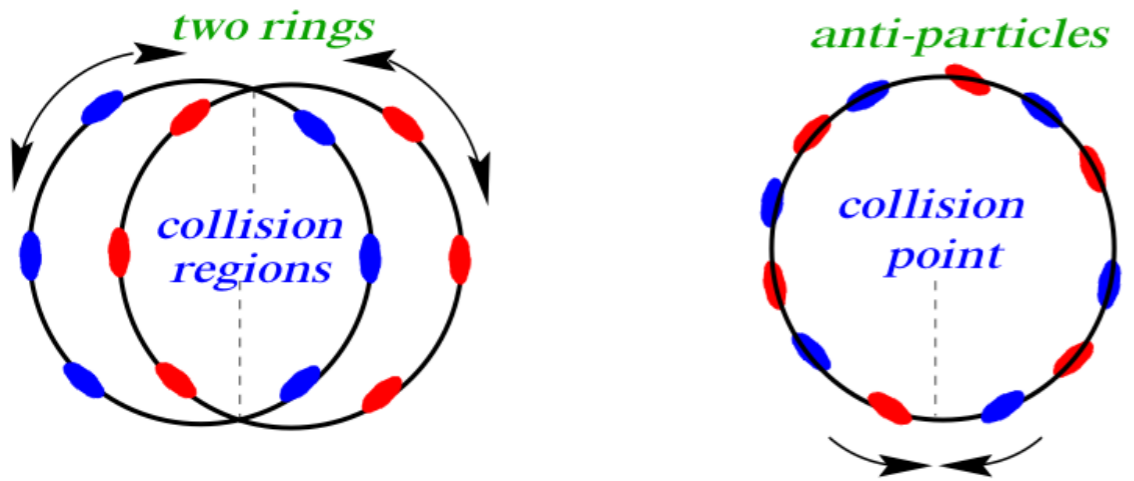


$$F = evB = \frac{mv^2}{\rho}$$

LHC: $\rho = 2.8 \text{ km}$ given by LEP tunnel!

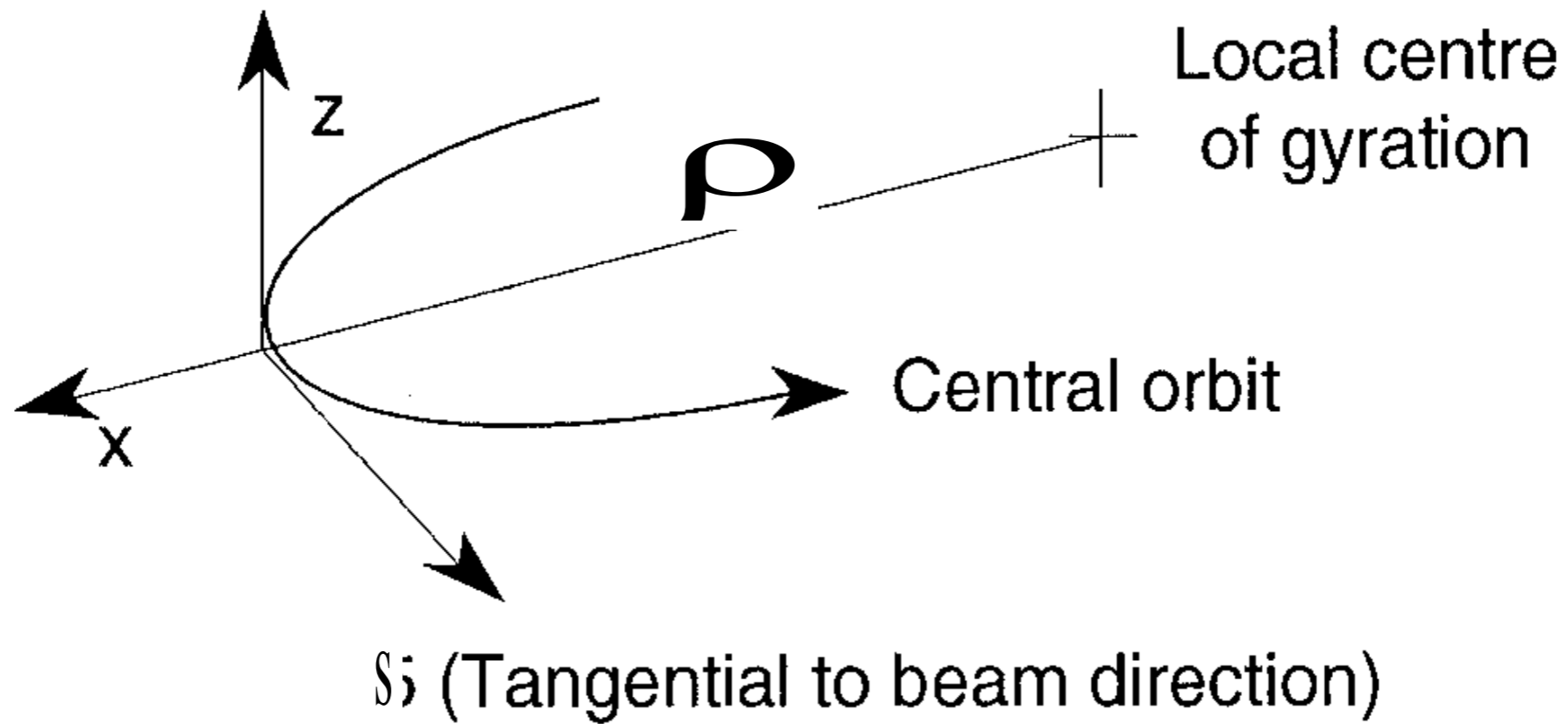
Fixes the relation between magnetic field and particle's energy

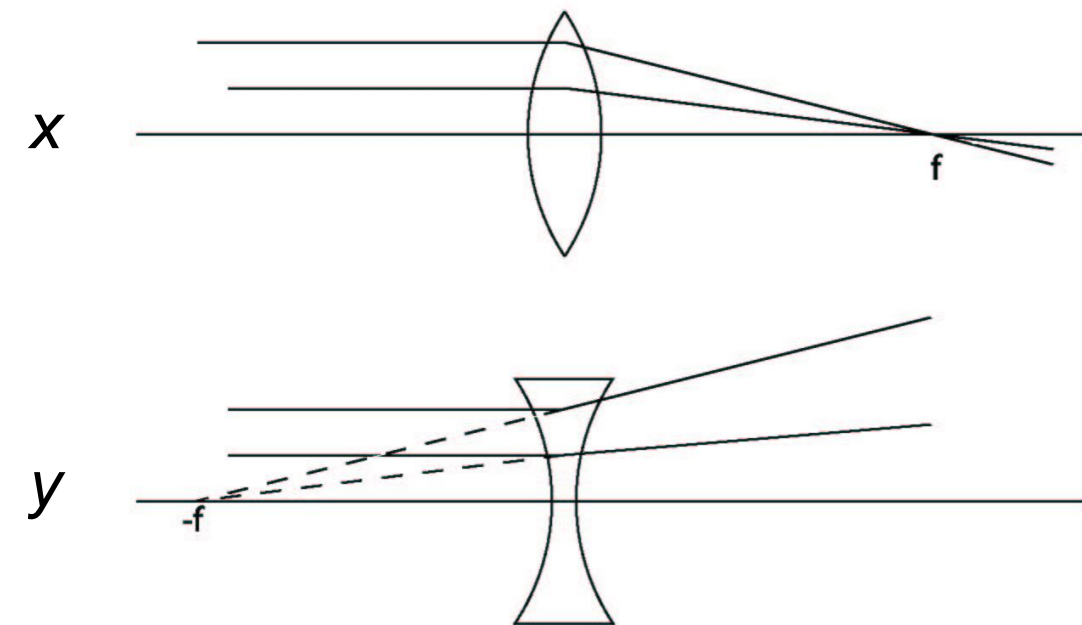
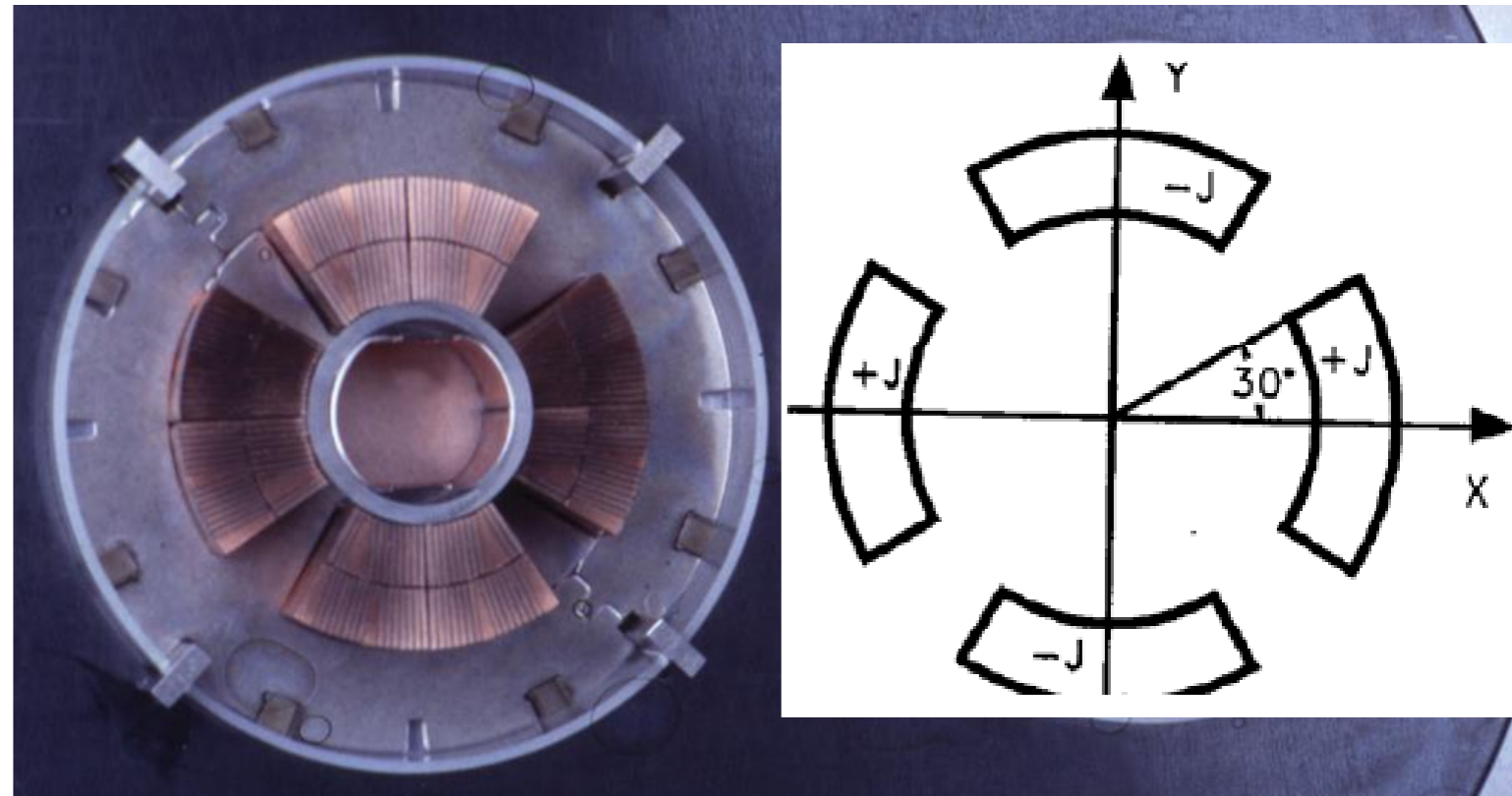
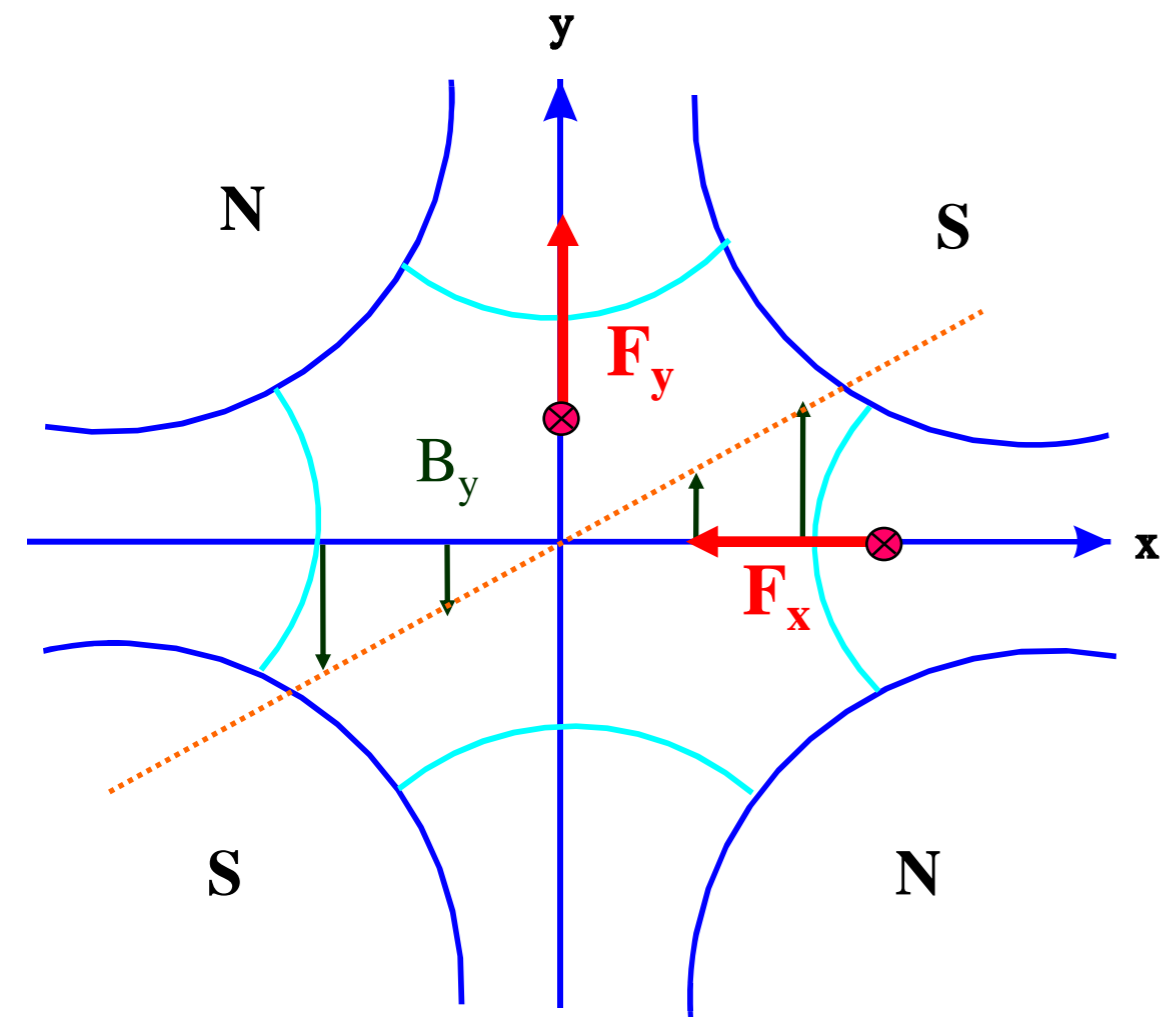
Bending



LHC: $B = 8.33 \text{ T} \Rightarrow E = 7 \text{ TeV}$

Transverse coordinates



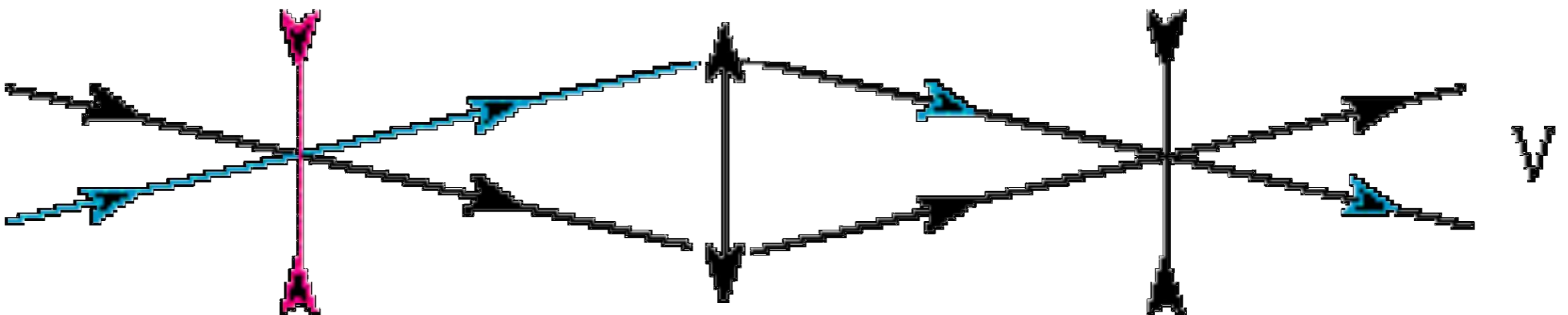
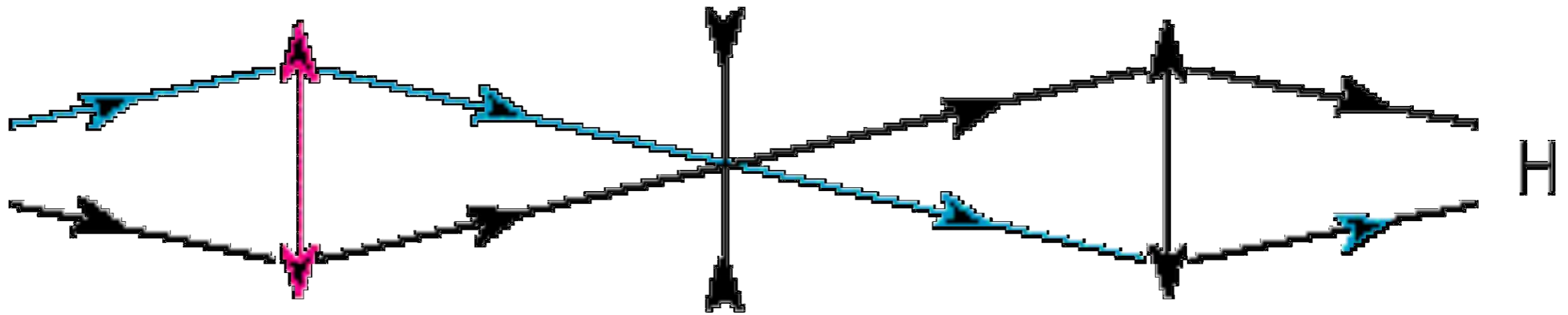


Transverse focusing is achieved with **quadrupole magnets**, which act on the beam like an optical lens.

Linear increase of the magnetic field along the axes (no effect on particles on axis).

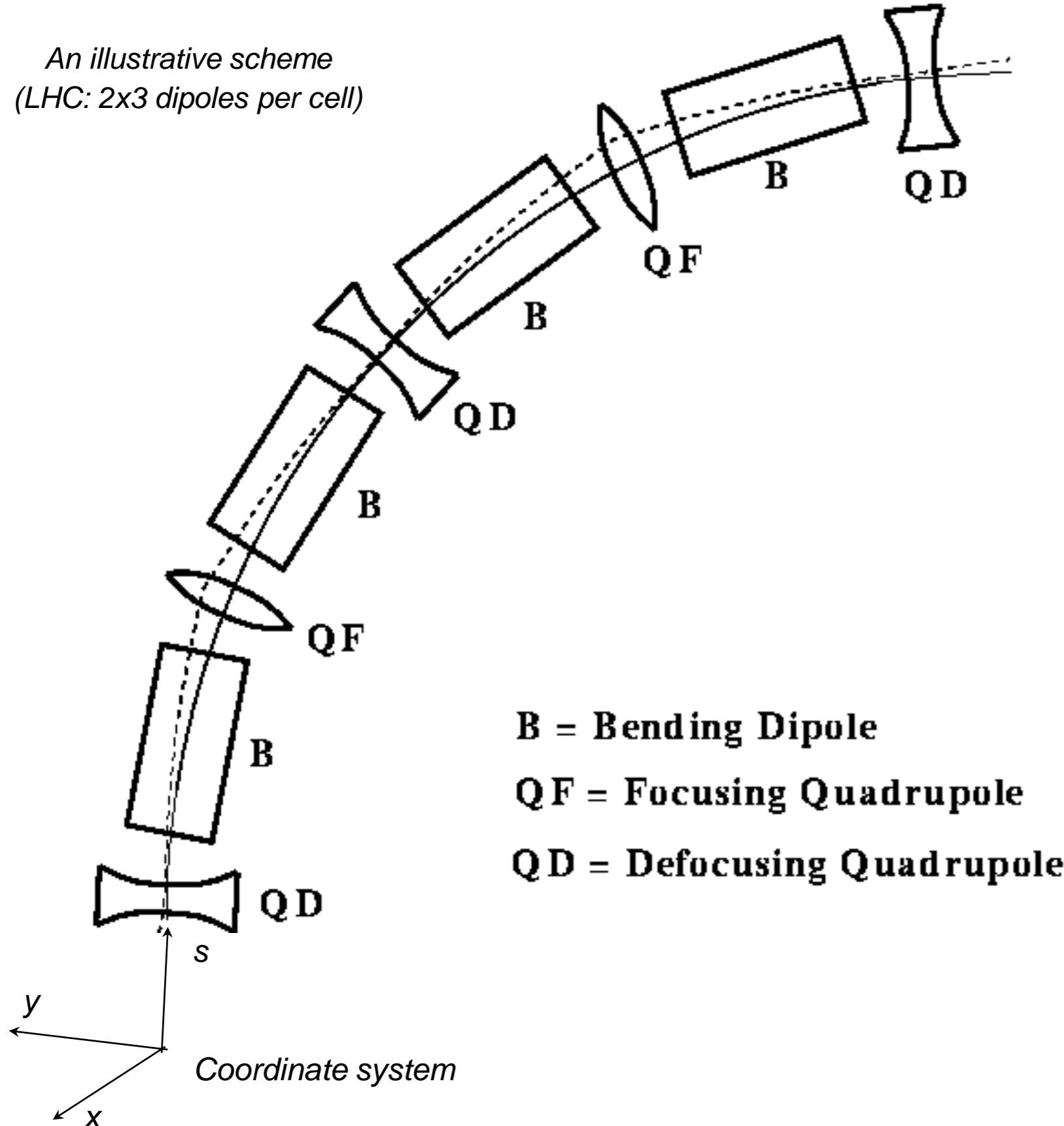
Focusing in one plane, **de-focusing** in the other!

Alternating gradients



Alternating gradient lattice

An illustrative scheme
(LHC: 2x3 dipoles per cell)

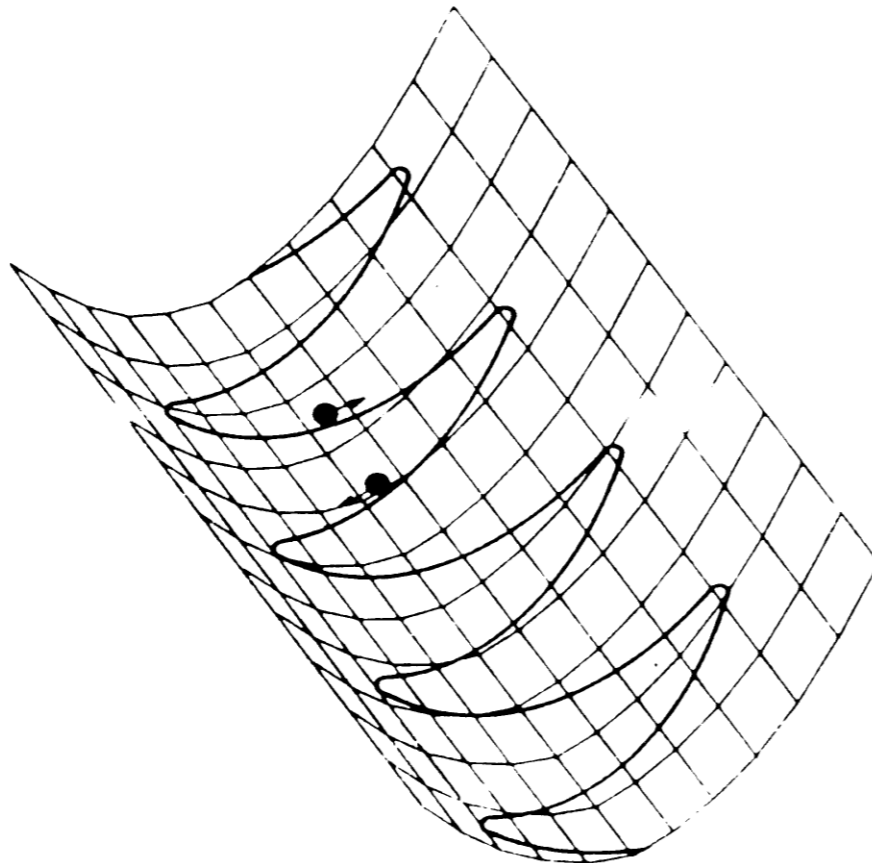


B = Bending Dipole
QF = Focusing Quadrupole
QD = Defocusing Quadrupole

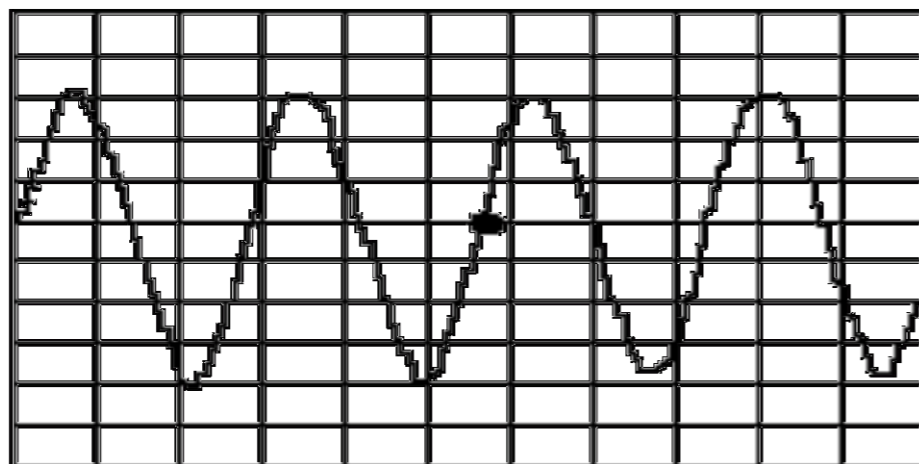
One can find an arrangement of quadrupole magnets that provides net focusing in both planes (“strong focusing”).

Dipole magnets keep the particles on the circular orbit.

Quadrupole magnets focus alternatively in both planes.

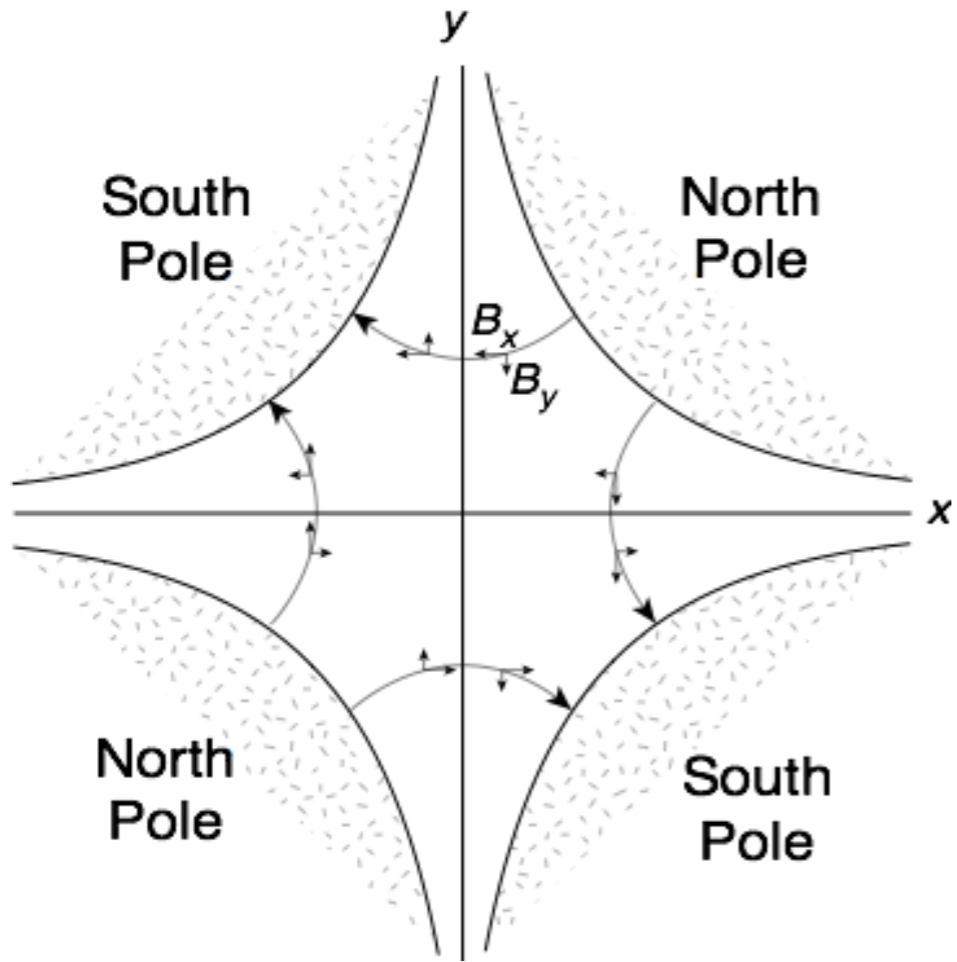


$$\mathcal{H} = \frac{(x')^2}{2} - \frac{A_s}{(B\rho)}$$



$$\mathcal{H} = \frac{(x')^2}{2} + \frac{k(s)x^2}{2}$$

But what you may ask is B-rho



and its solution

Magnetic field [T] : $B_y = \frac{\partial B_y}{\partial x} \times x$

Field gradient [T m⁻¹] : $g = \frac{\partial B_y}{\partial x}$

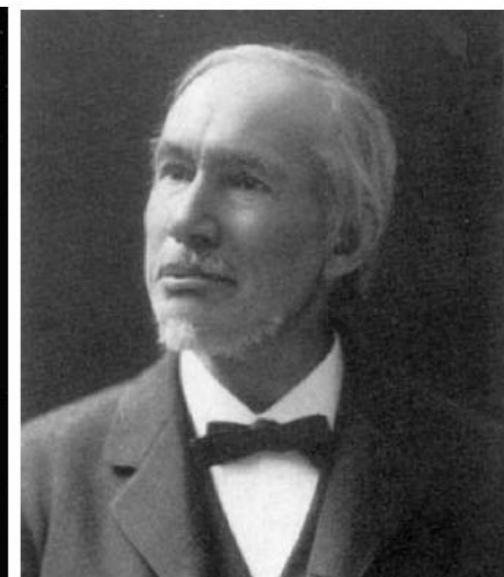
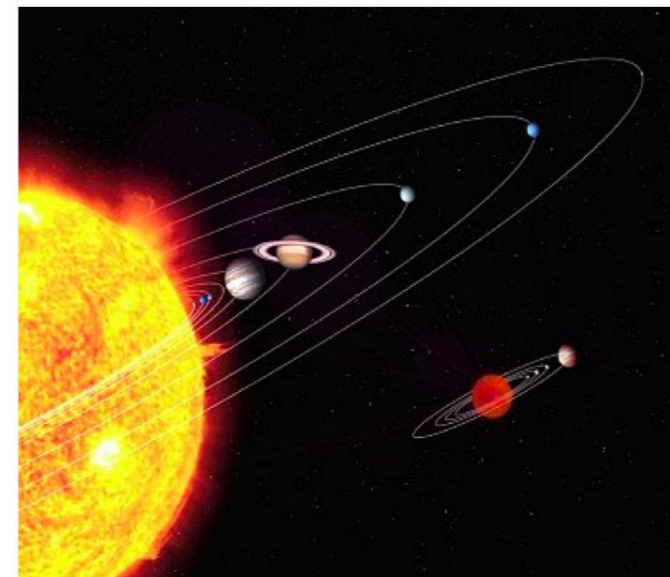
Normalized grad. [m⁻²] : $K = \frac{g}{p_0/e} = \frac{1}{f}$

$$x'' + K(s)x = 0$$

Hill's equation

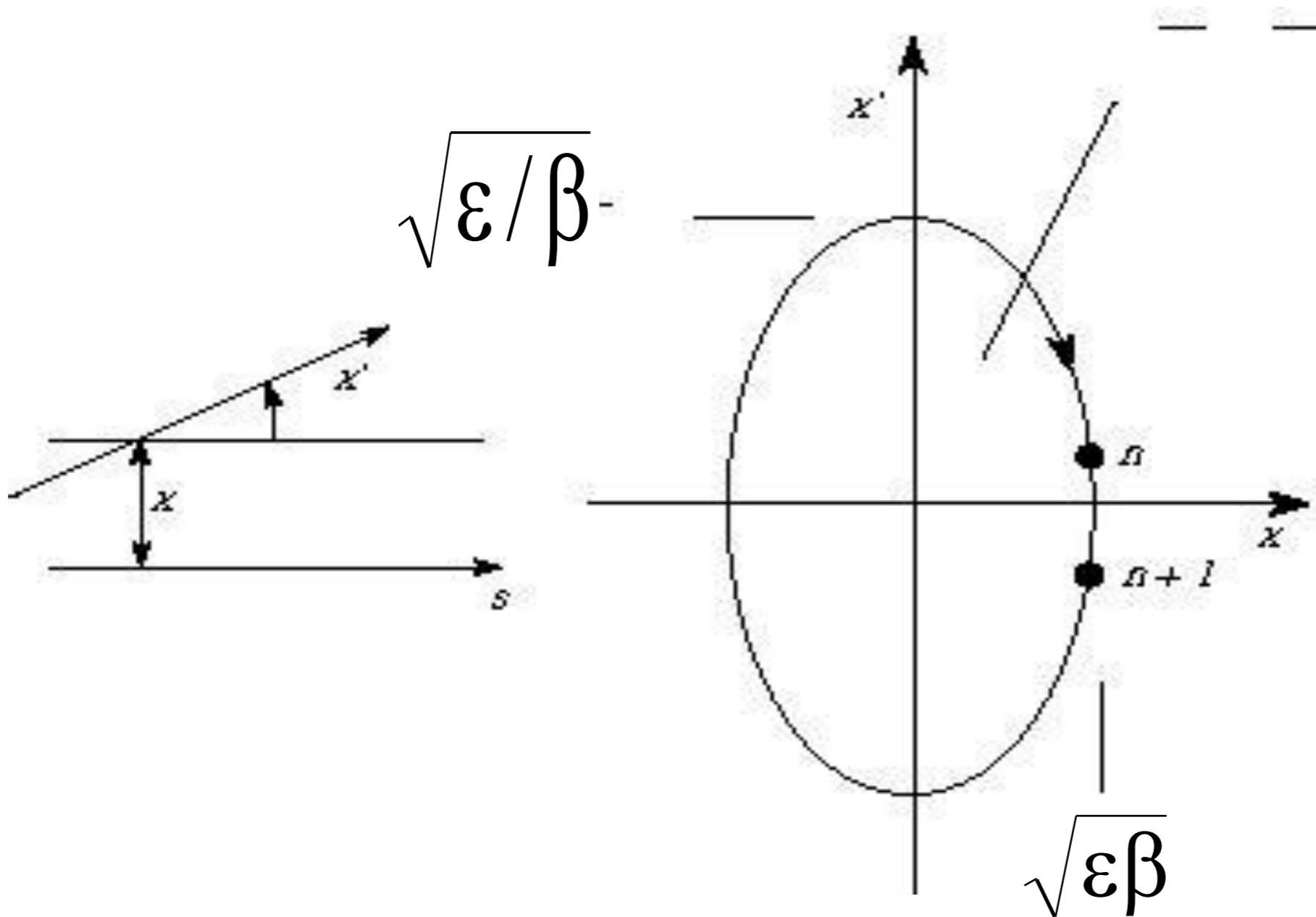
K(s) describes the distribution of focusing strength along the lattice.

$$x(s) = \sqrt{\varepsilon_x \beta_x} \cos[\phi(s) + \phi_0]$$

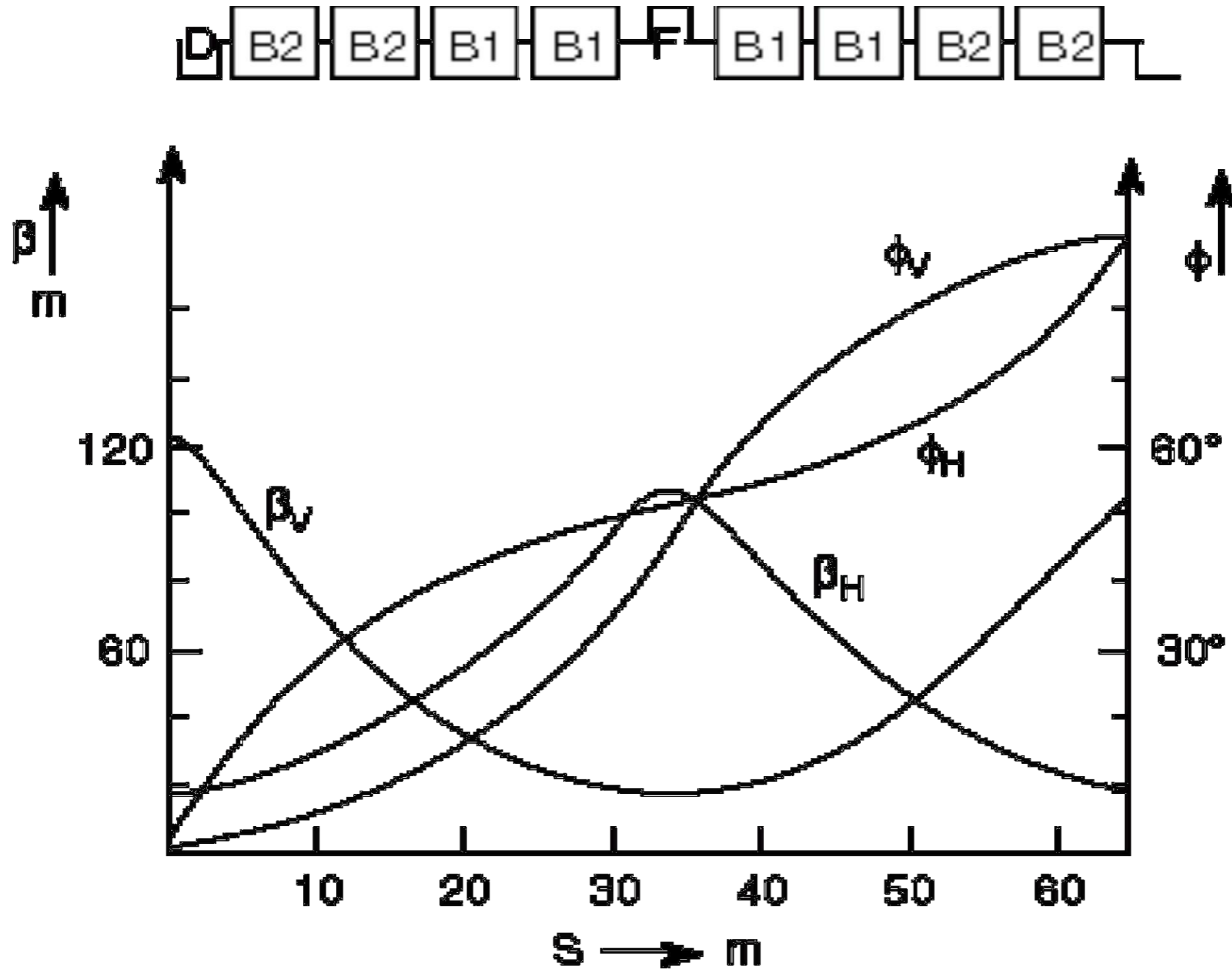


Transverse ellipse

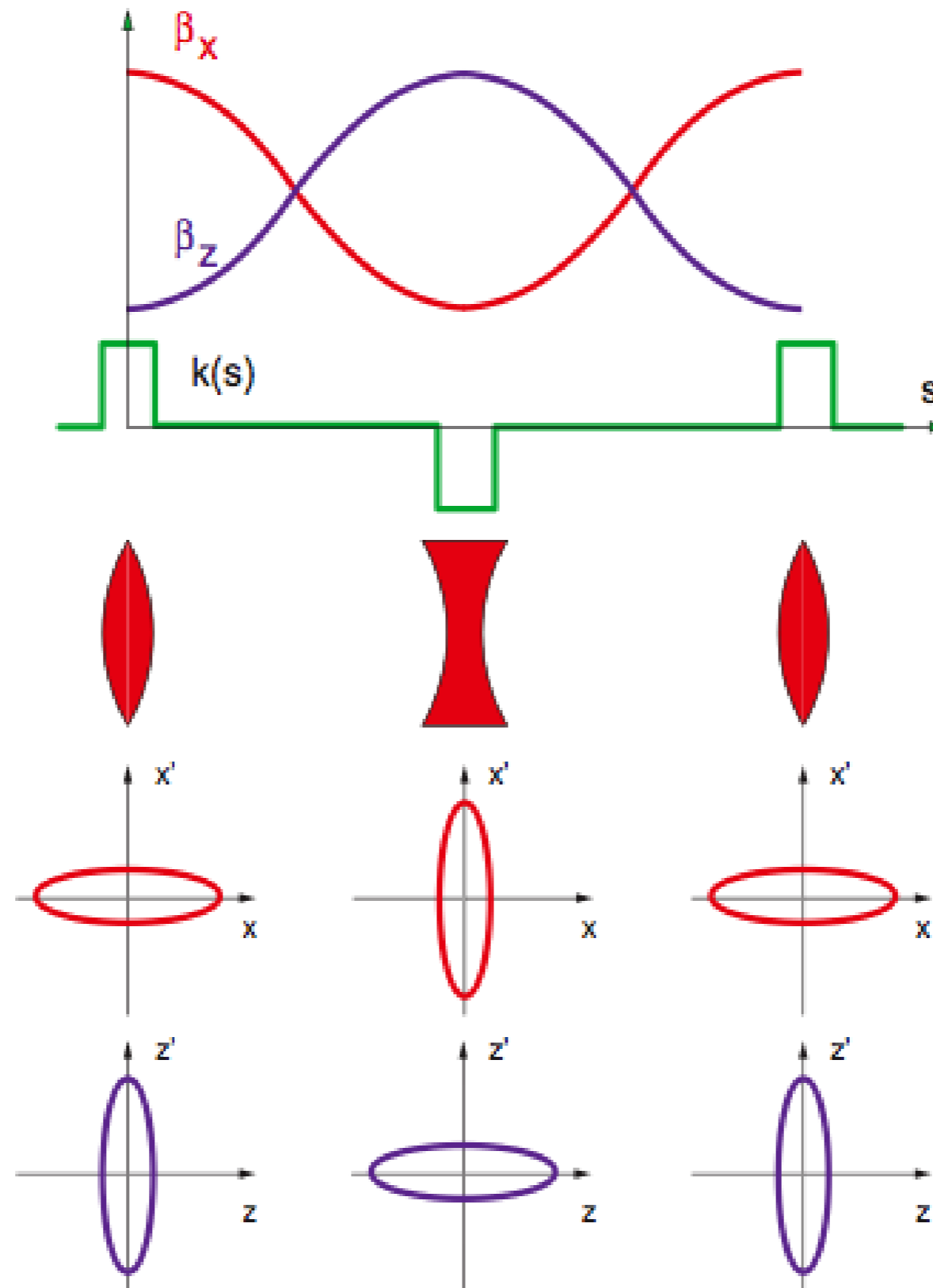
$$\text{Area} = \pi \sqrt{\epsilon \beta} \cdot \sqrt{\epsilon / \beta} = \pi \epsilon$$



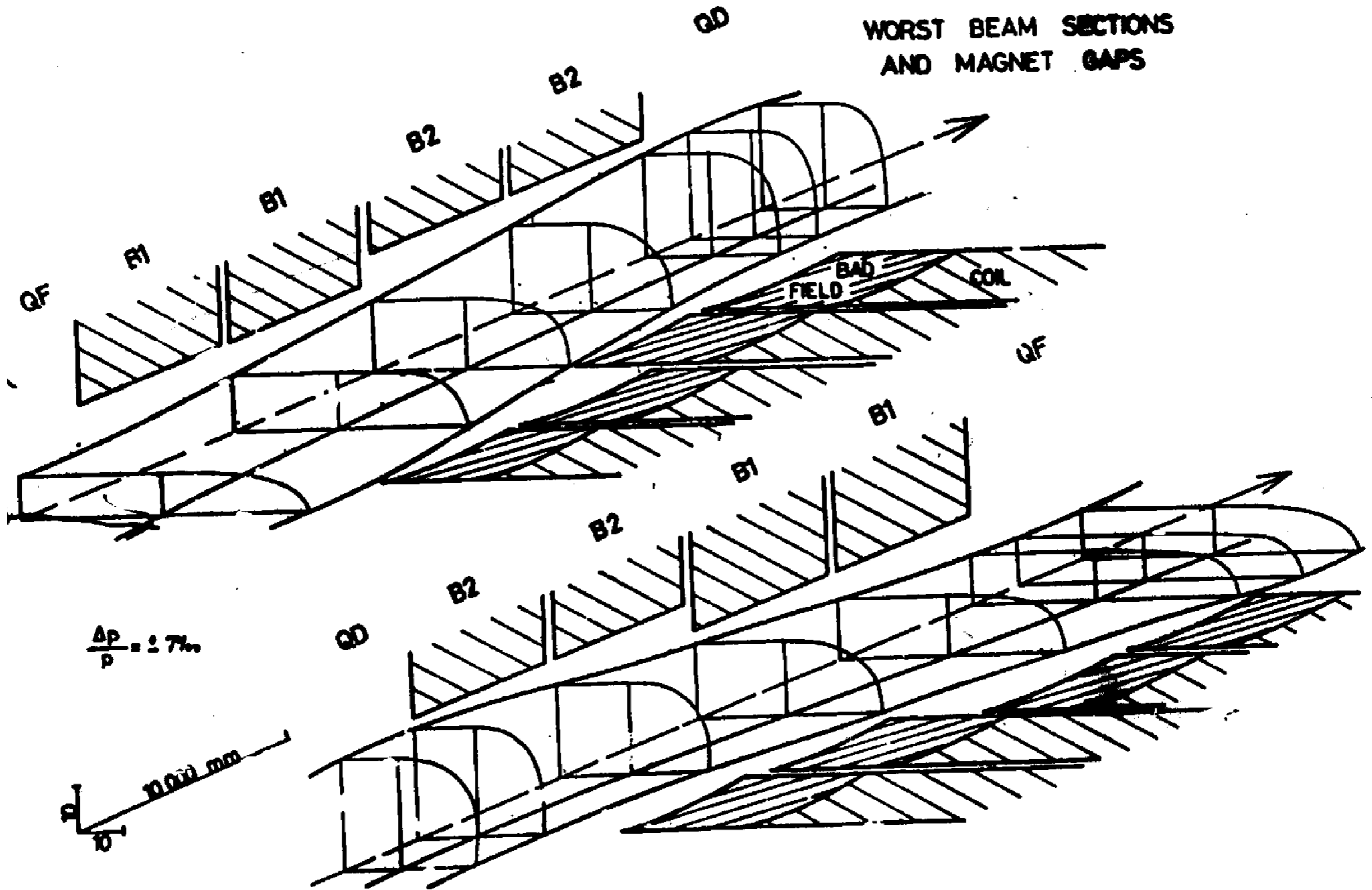
The lattice



Emittance and beam size (ii)



Beam sections

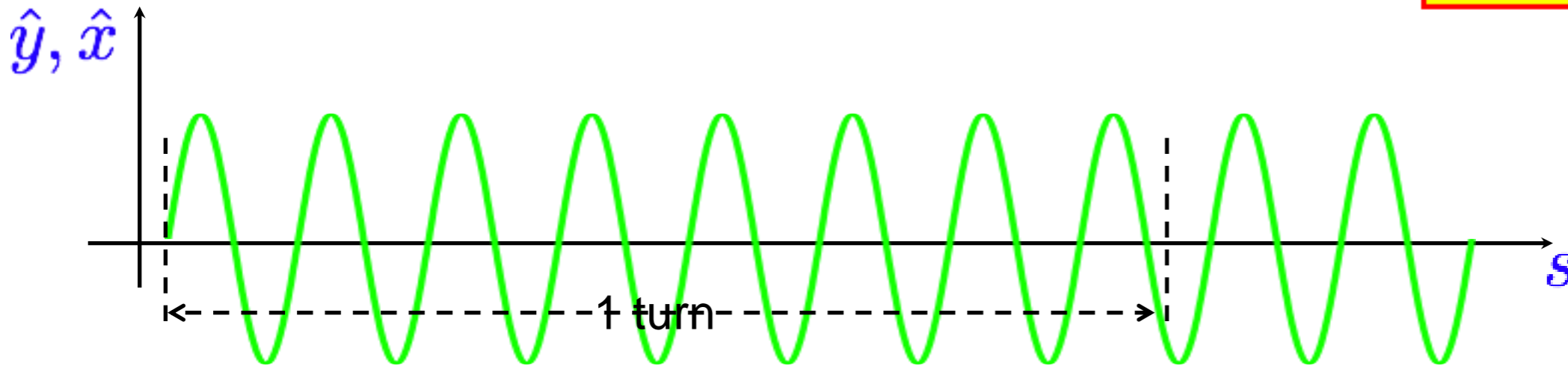


Betatron phase advance over 1 turn:

$$\mu = \oint \frac{ds}{\beta(s)}$$

Betatron tune:

$$Q \equiv \frac{1}{2\pi} \oint \frac{ds}{\beta(s)}$$

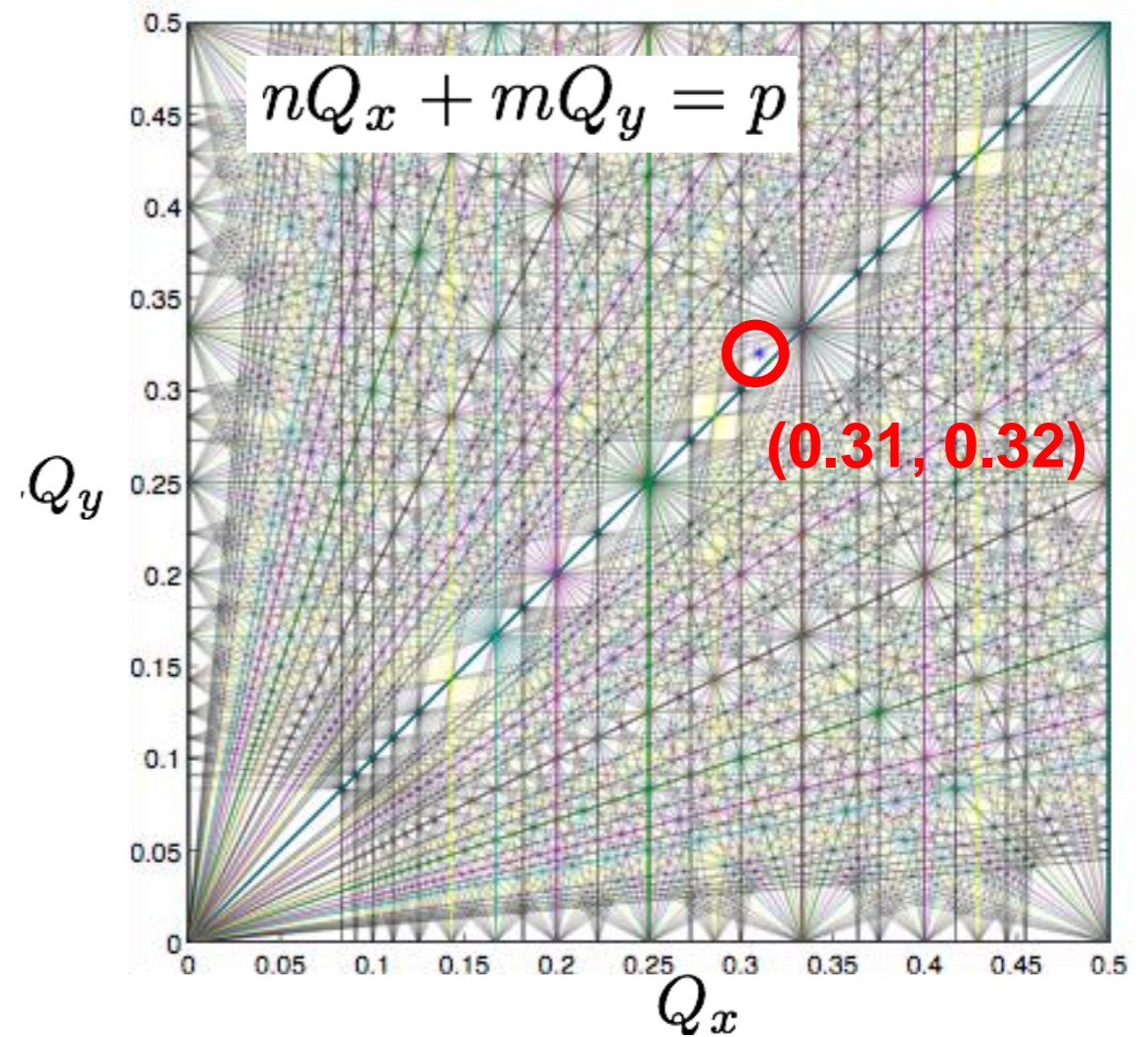


The tune is the **number of betatron oscillations per turn**.

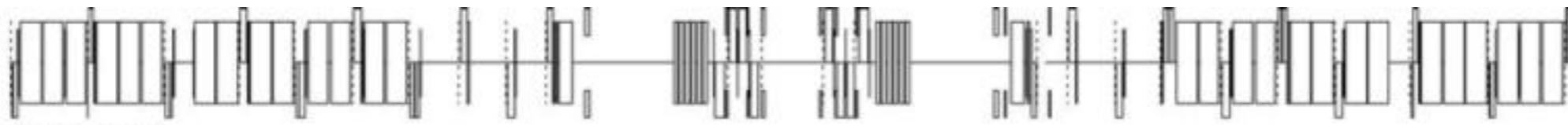
We normally only care about the **fractional part** of the tune! 64.31 is 0.31!

The operating tune values (**working point**) must be chosen to avoid resonance.

The tune values must be controlled to within better than 10^{-3} , during all machine phases (ramp, squeeze, ...)



Beta functions for IP1 and IP5

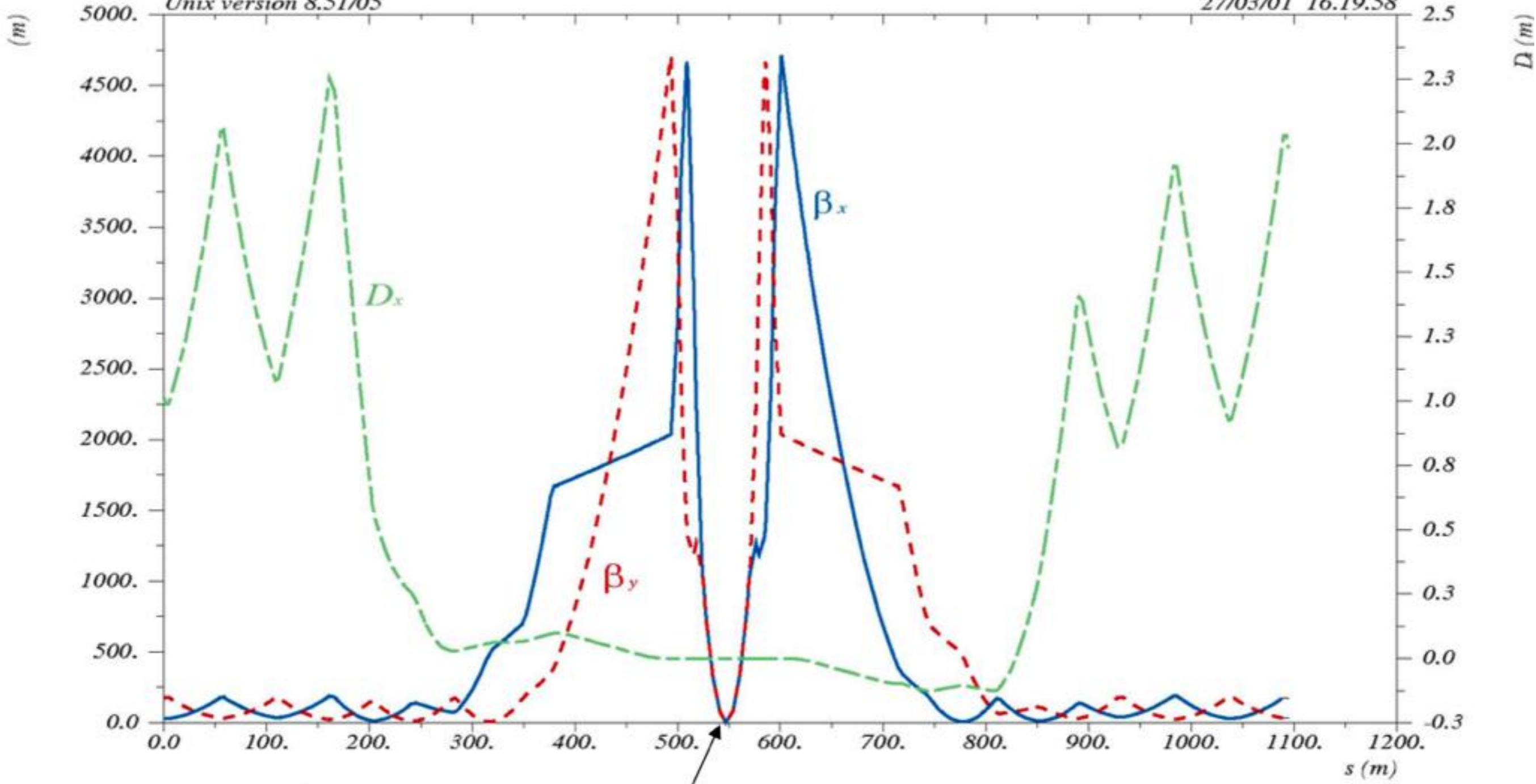


LHC V6.1

/afs.../eng.../V6.2/V6.2.seq, K450Is64-59nV6.2.opt, rematch I6 Ap. OK

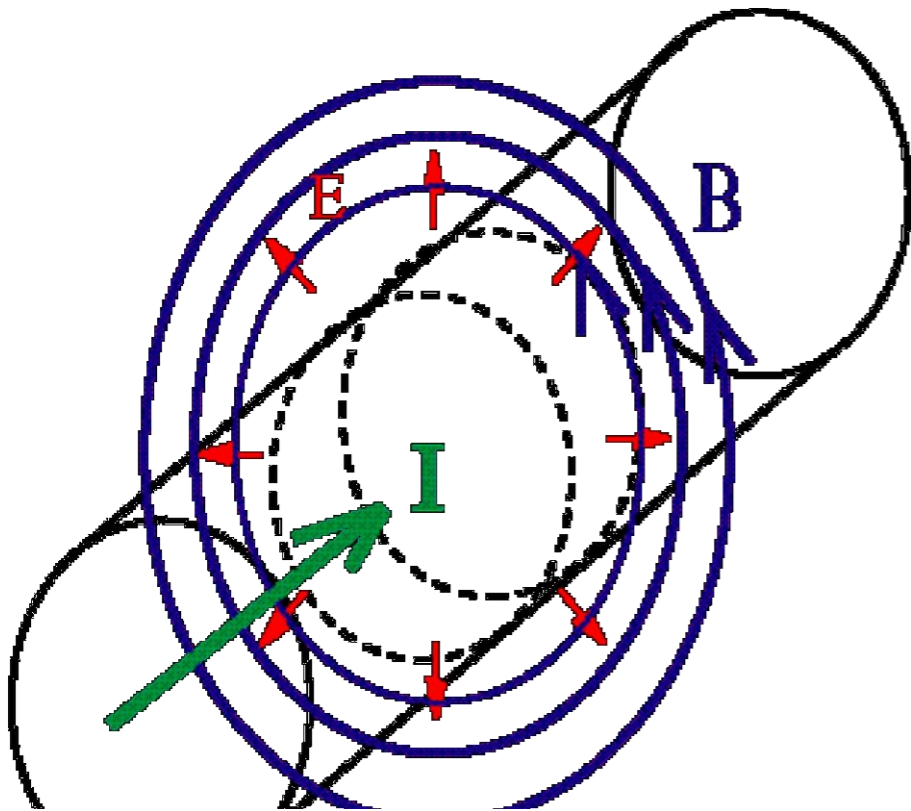
Unix version 8.51/05

27/03/01 16.19.58



$\epsilon/p_0c = 0.$

$\beta = 55 \text{ cm} \rightarrow \sigma = 16 \mu\text{m}; D = 0\text{m}$



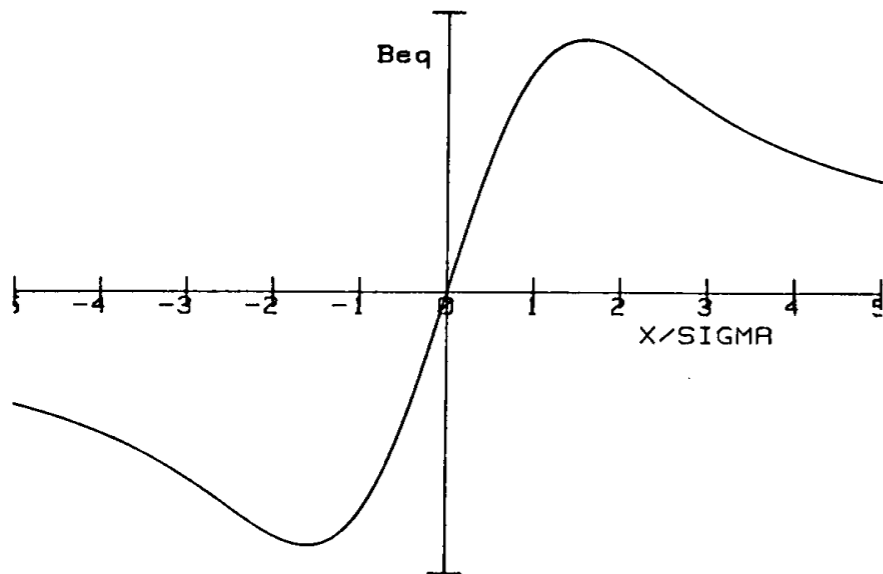
$$\Delta Q = \frac{\beta^* N r_0}{4\pi\gamma\sigma^2} \leq 0.01$$

$$L = \frac{N^2 f k}{4\pi\gamma\sigma^2}$$

ΔQ

Juggling produces

$$L = \frac{N^2 f k \gamma}{r_0 \beta^*} \Delta Q$$



End of digression to explain transverse motion

LHC design parameters

Nominal LHC parameters	
Beam injection energy (TeV)	0.45
Beam energy (TeV)	7.0
Number of particles per bunch	1.15×10^{11}
Number of bunches per beam	2808
Max stored beam energy (MJ)	362
Norm transverse emittance ($\mu\text{m rad}$)	3.75
Colliding beam size (μm)	16
Bunch length at 7 TeV (cm)	7.55

- These are the key parameters of a collider – the LHC
 - Why are they important for physics?
- What is the basic theory which limits each one of them?

Acceleration is performed with electric fields fed into **Radio-Frequency (RF) cavities**.

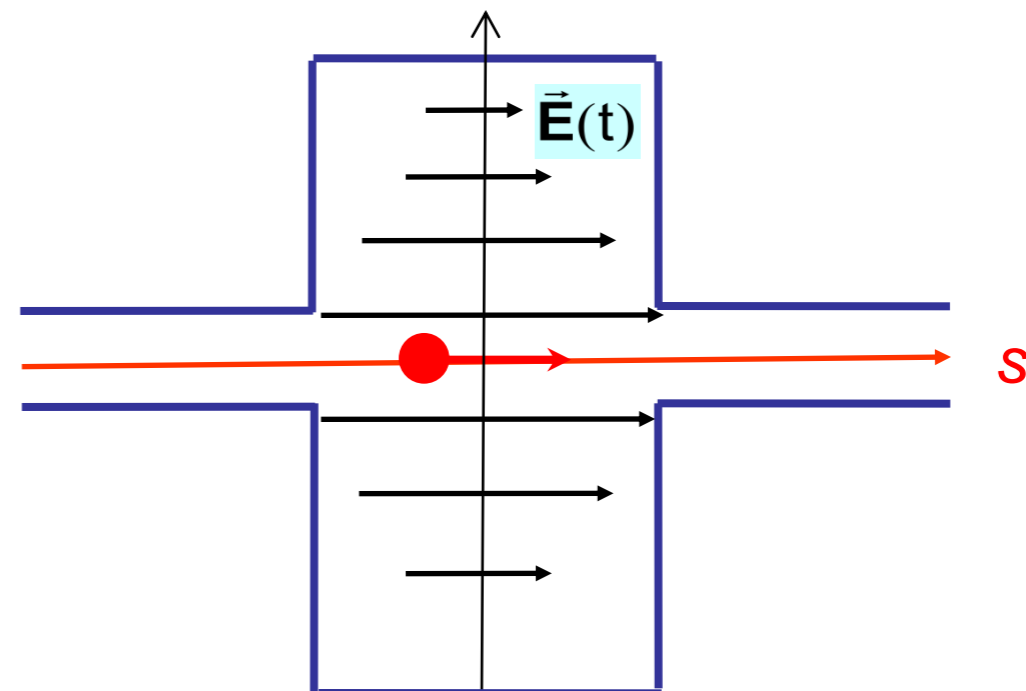
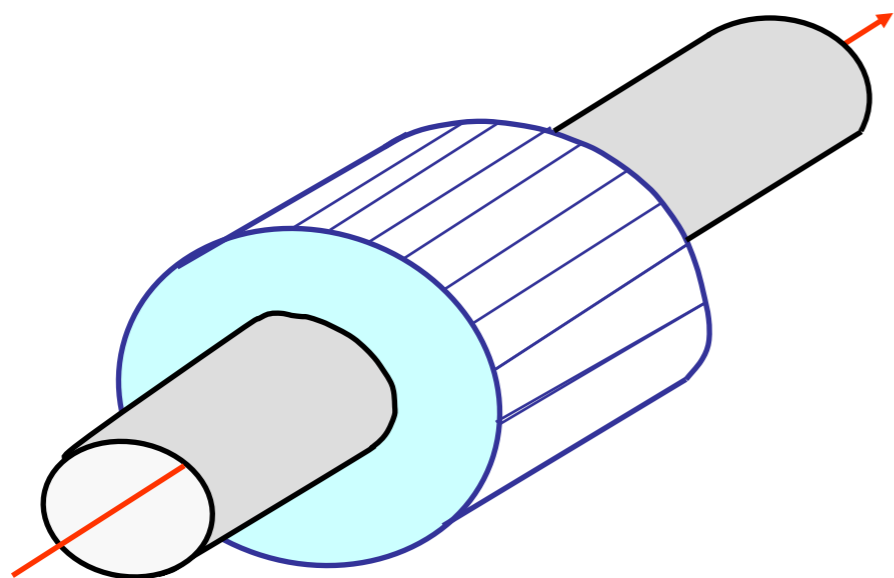
RF cavities are basically resonators tuned to a selected frequency.

In circular accelerators, the acceleration is done with small steps at each turn.

LHC: 8 RF cavities per beam (400 MHz), located in point 4

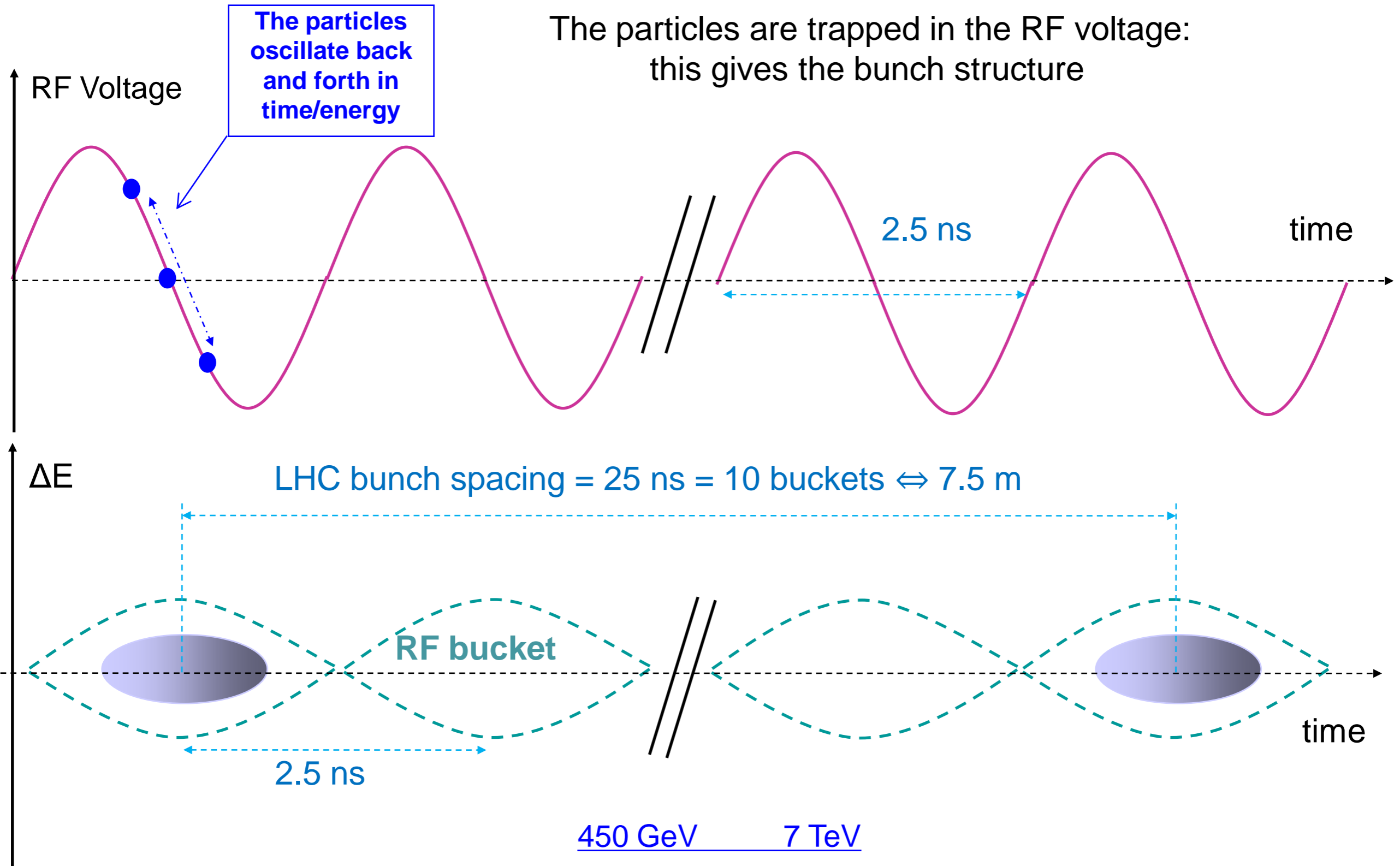
At the LHC, the acceleration from **450 GeV** to **7 TeV** lasts ~ 20 minutes (nominal!), with an average energy gain of ~ 0.5 MeV on each turn.

[Today, we ramp at a factor 4 less energy gain per turn than nominal!]



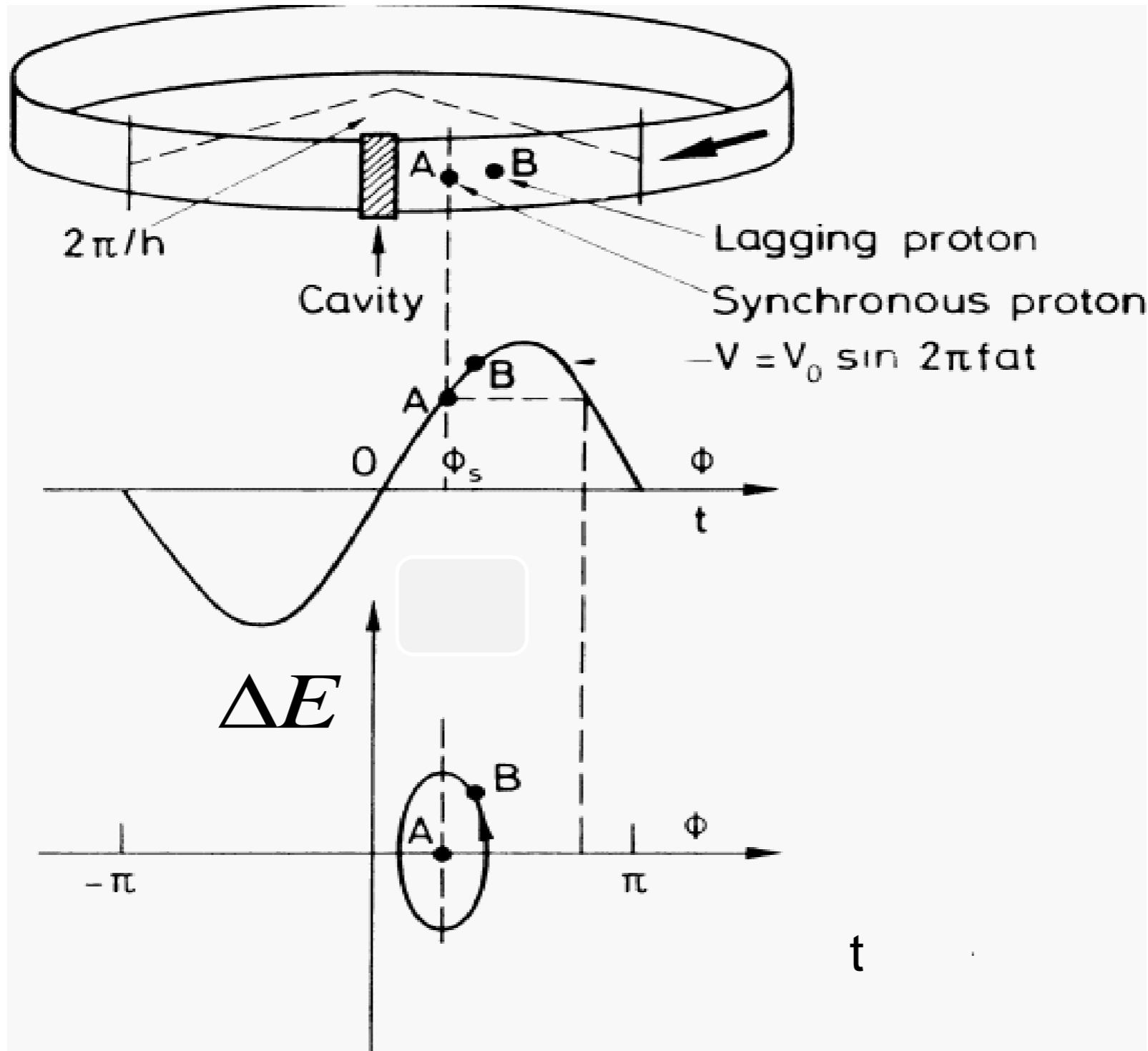
Buckets and bunches

The particles are trapped in the RF voltage:
this gives the bunch structure



	450 GeV	7 TeV
RMS bunch length	11.2 cm	7.6 cm
RMS energy spread	0.031%	0.011%

Phase stability



- But is speed more important than path length
- Digress again for Dispersion?

Dispersion

Dipole = spectrometer

Closed orbit for $p < p_0$

Lattice property

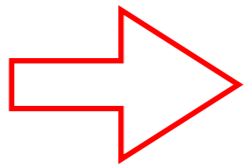
Particle's momentum error

$$\Delta x(s) = D(s) \times \frac{\Delta p}{p}$$

Central design orbit = closed orbit for $p=p_0$

Closed orbit for $p > p_0$

$$x'' + K(s)x = \frac{1}{\rho} \frac{\Delta p}{p_0}$$



$$x(s) = A\sqrt{\beta_x(s)} \cos[\phi(s) + \phi_0] + D(s) \times \frac{\Delta p}{p}$$

Non-homogeneous Hill's equation

$D(s)$ = dispersion function. Periodic in s .

Transition - does an accelerated particle catch up - it has further to go

$$f = \frac{\beta c}{2\pi R}, \quad (\beta = v/c)$$

$$\eta_{rf} = \frac{\Delta f / f}{\Delta p / p} = \frac{p}{\beta} \frac{d\beta}{dp} - \frac{p}{R} \frac{dR}{dp} = \frac{1}{\gamma^2} - \frac{\bar{D}}{R_0}$$

$$\Delta E = V_0 (\sin \phi - \sin \phi_s)$$

$$\ddot{\phi} = -\frac{2\pi V_0 h \eta f^2}{E_0 \beta^2 \gamma} (\sin \phi - \sin \phi_s)$$

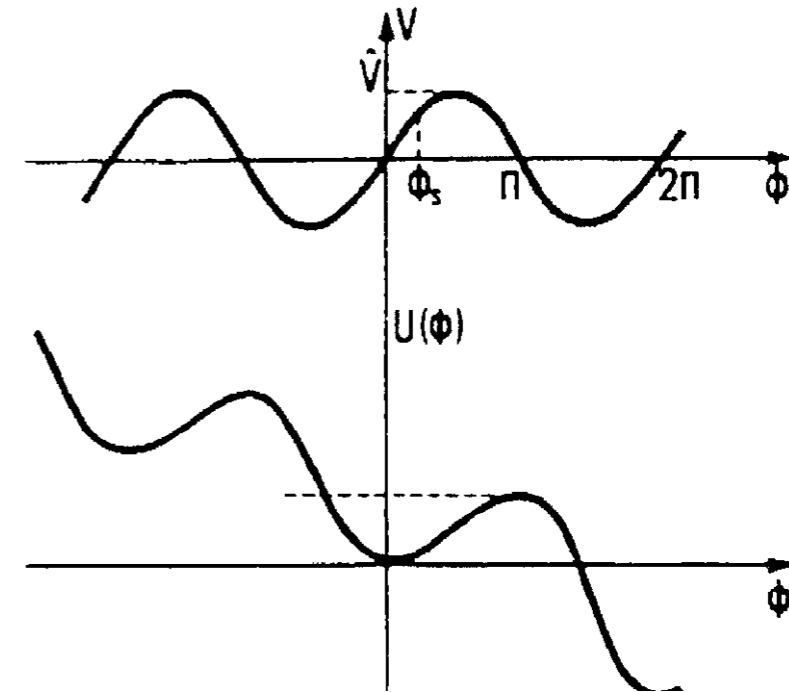


Transition - does an accelerated particle catch up - it has further to go



Above is the voltage applied

Below it is integrated by phase which is a potential



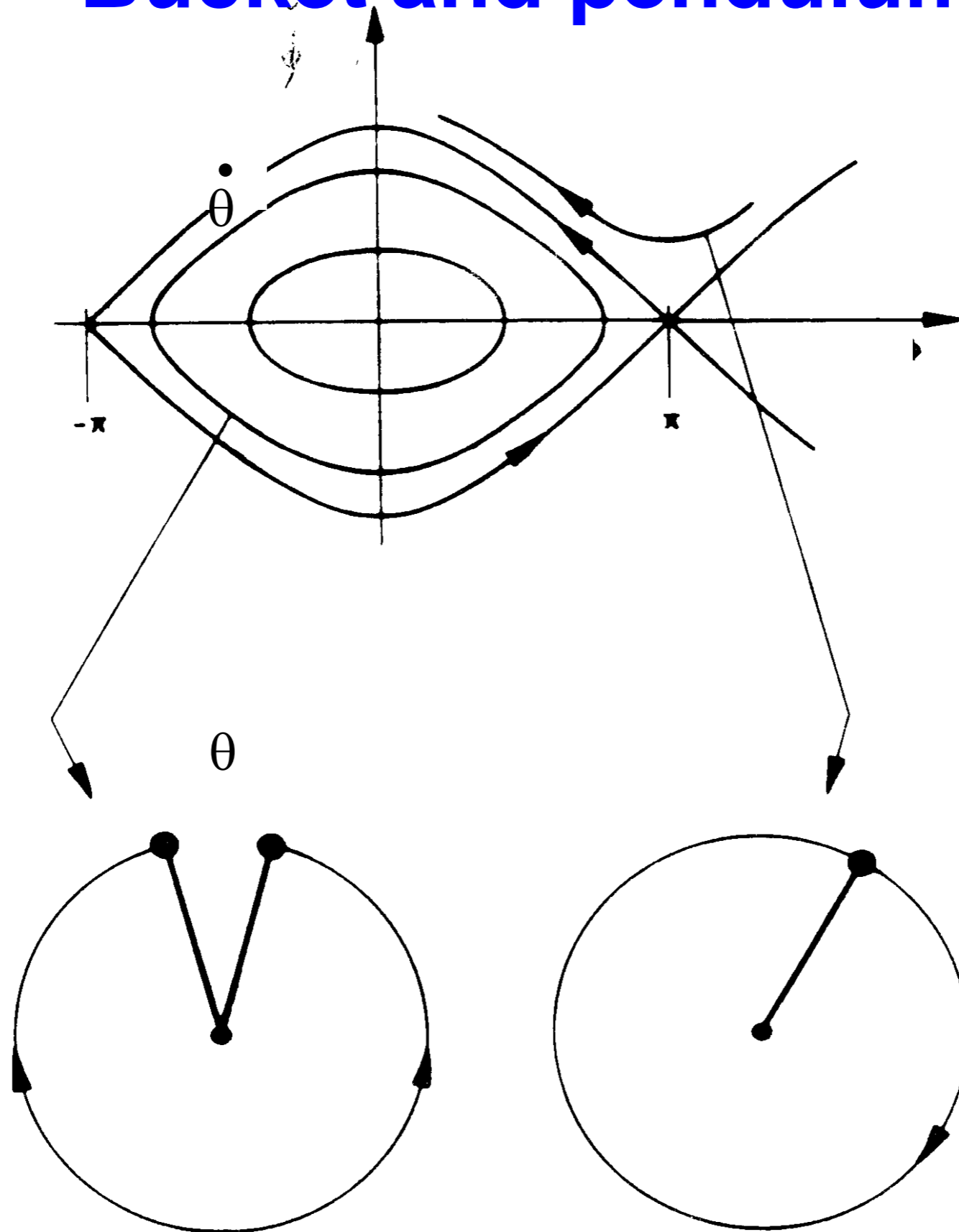
Here is an expression for energy (quasi Hamiltonian)

$$\frac{\dot{\phi}^2}{2} - \frac{\Omega_s^2}{\cos \phi_s} (\cos \phi + \phi \sin \phi_s) = \text{const.}$$

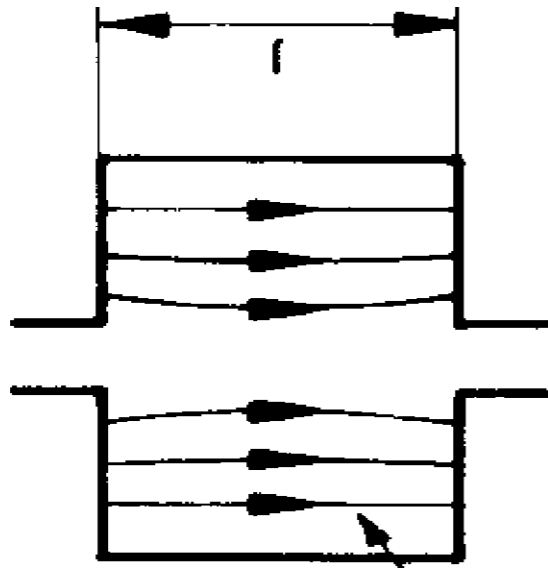
From which we can derive the equation of motion

$$\ddot{\phi} = - \frac{2\pi V_0 h \eta f^2}{E_0 \beta^2 \gamma} (\sin \phi - \sin \phi_s)$$

Bucket and pendulum

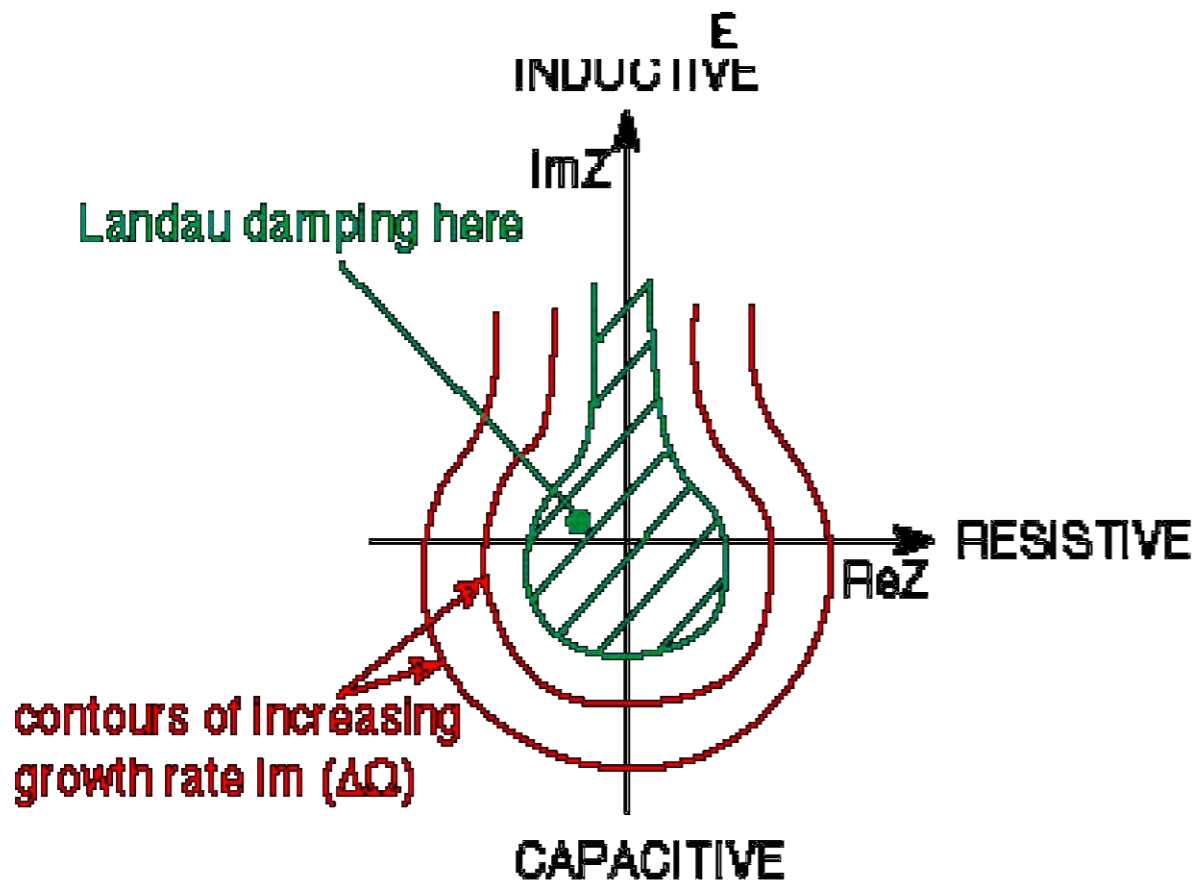


Instability

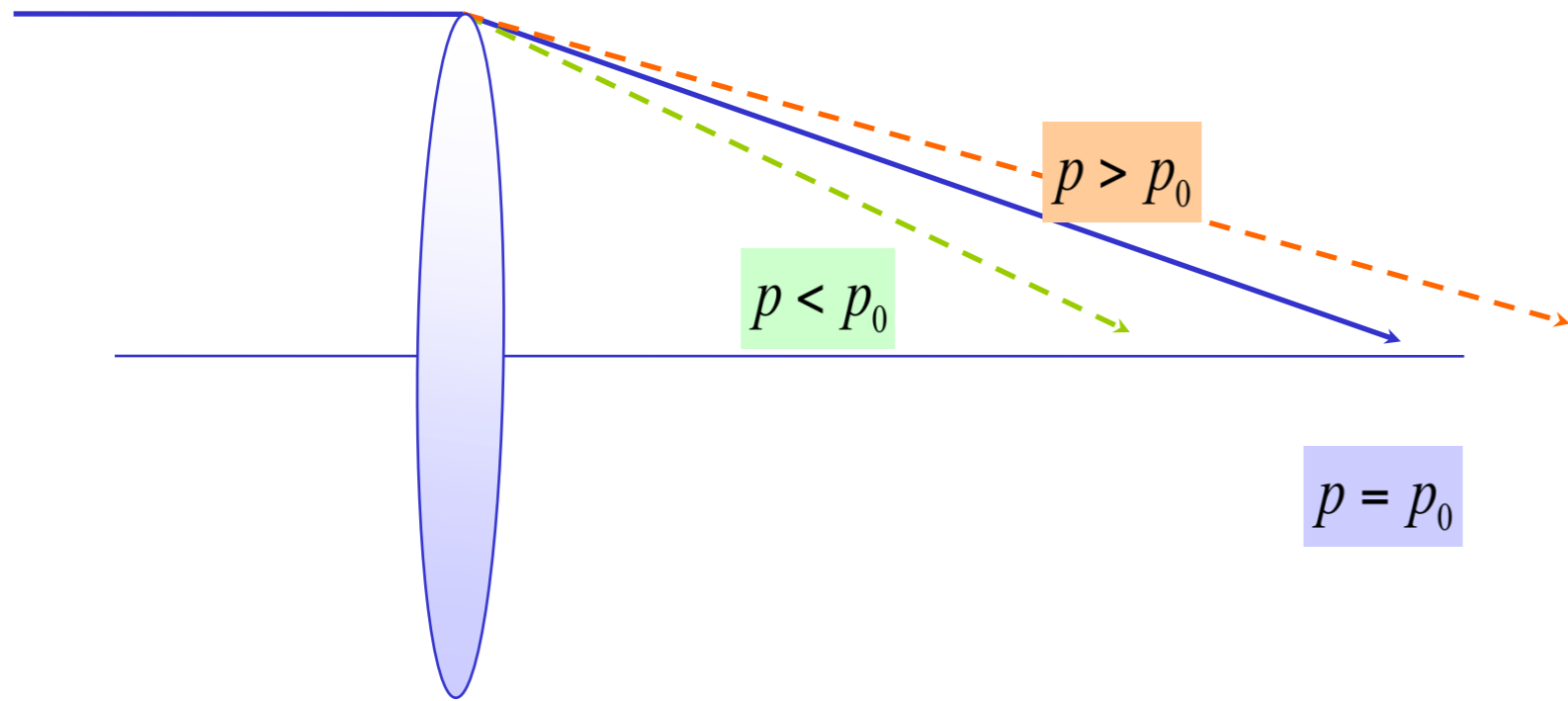


$$I = \hat{I} e^{-i\omega t}$$

$$U = \hat{U} e^{-i\omega t}$$



$$Z = X + iY = \frac{U}{I}$$



$$Q' = \frac{\Delta Q}{\Delta p / p}$$

Particles with different energies have different betatron tunes.

Bad for the beam:

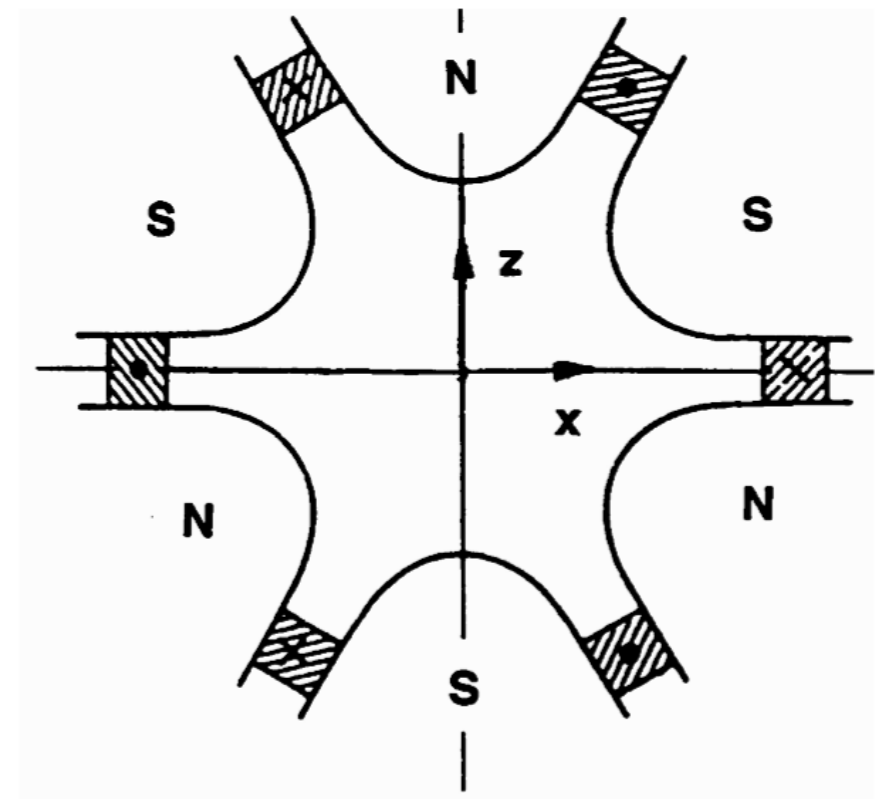
- Adds a tune spread
- Instabilities (“head-tail”)

Focusing error from momentum errors $\sim -K \Delta p/p$

Chromaticity corrections is done with **sextupole magnets**. The field changes as x^2 .

LHC:

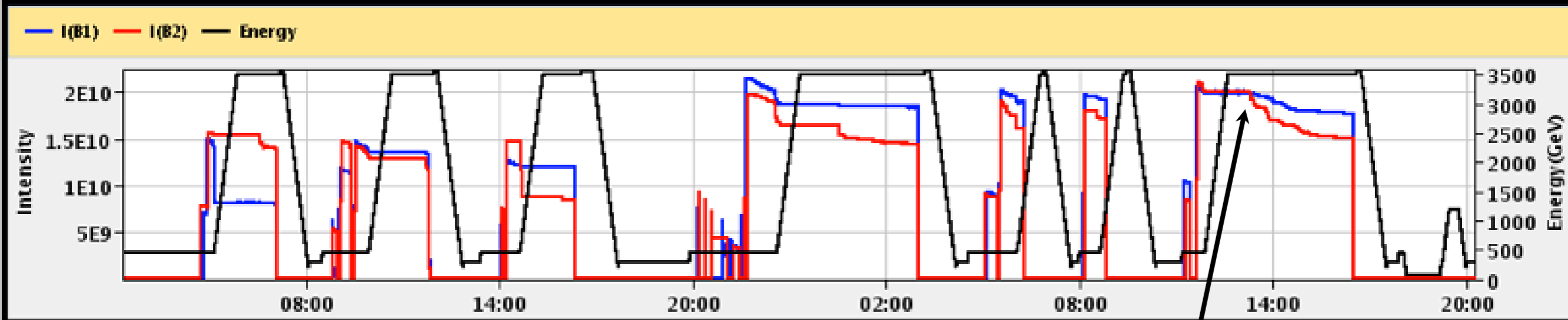
2 sextupole families per plane per beam for chromaticity correction.



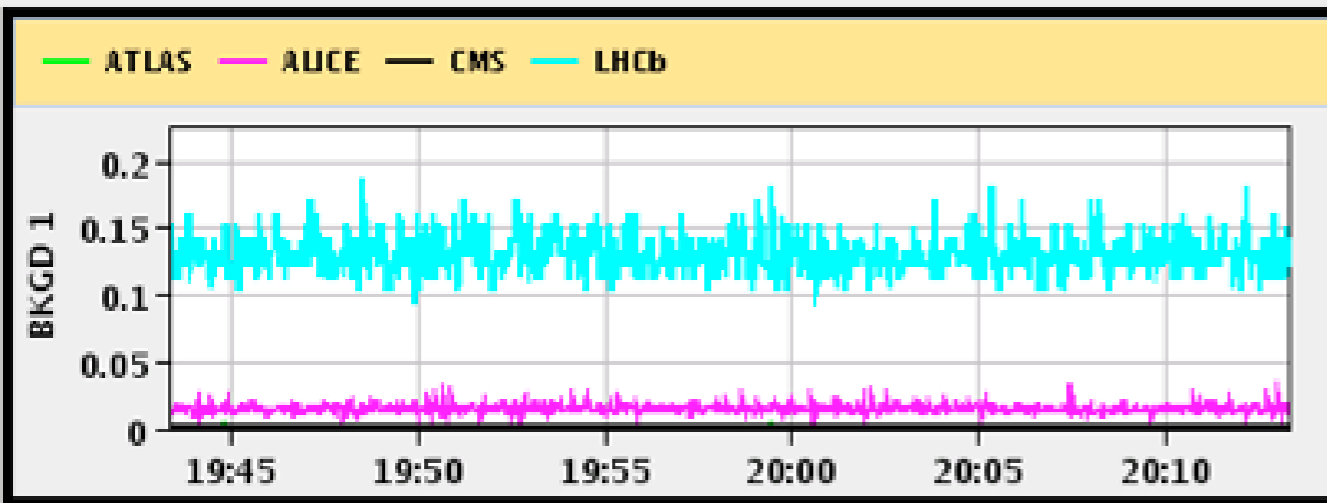
	ATLAS	ALICE	CMS	LHCb
Experiment Status	STANDBY	STANDBY	STANDBY	STANDBY
Instantaneous Luminosity	0.000e+00	0.000e+00	0.000e+00	0.000e+00
BRAN Count Rate	1.559e-01	2.818e-05	2.969e+00	2.732e-07
BKGD 1	0.002	0.013	0.002	0.122
BKGD 2	0.000	0.000	0.002	0.002
BKGD 3	0.000	0.005	0.003	0.040

LHCf **STANDBY** Count(Hz): 0.000 LHCb VELO Position **OUT** Gap: 58.0 mm TOTEM: **STANDBY**

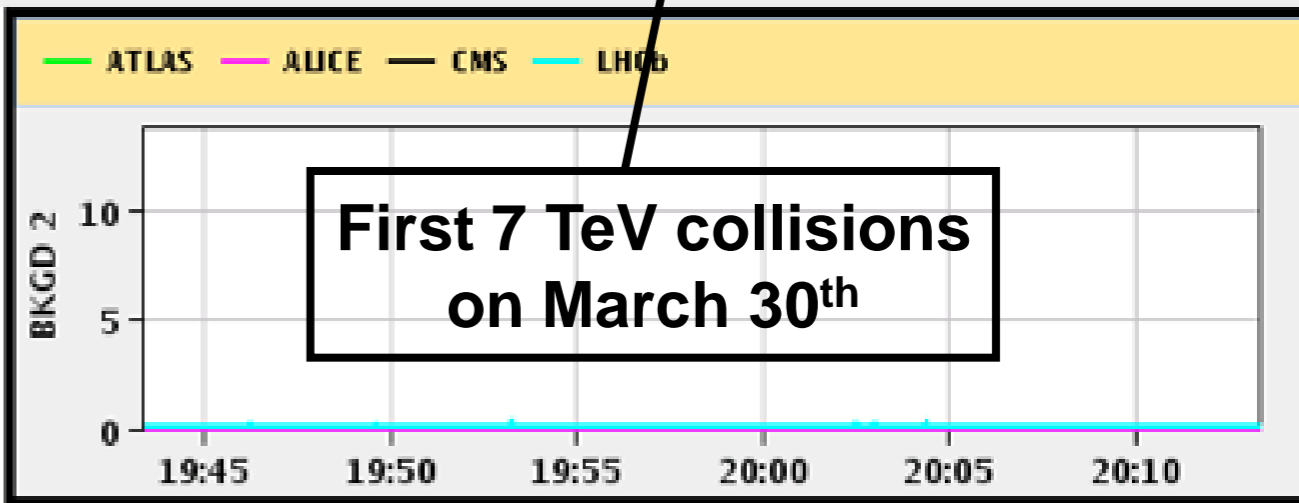
Performance over the last 12 Hrs



Background 1



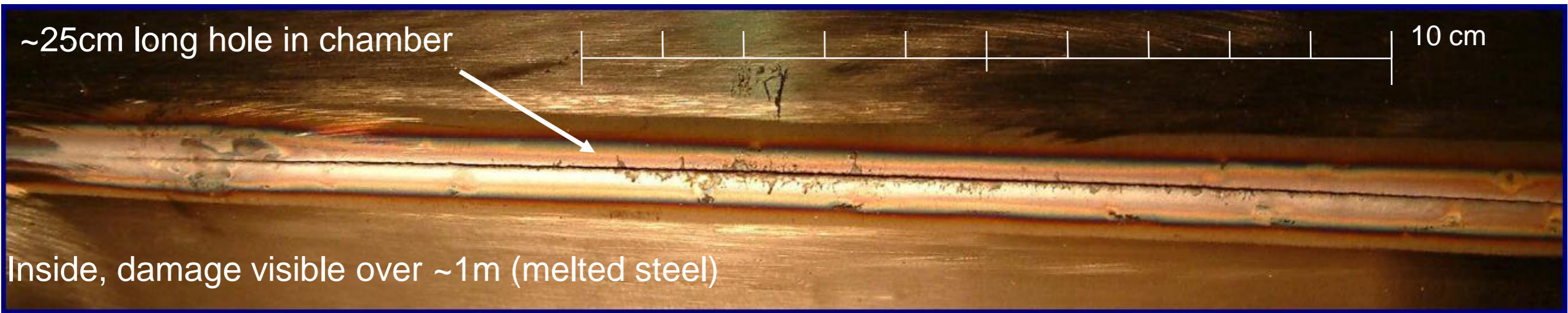
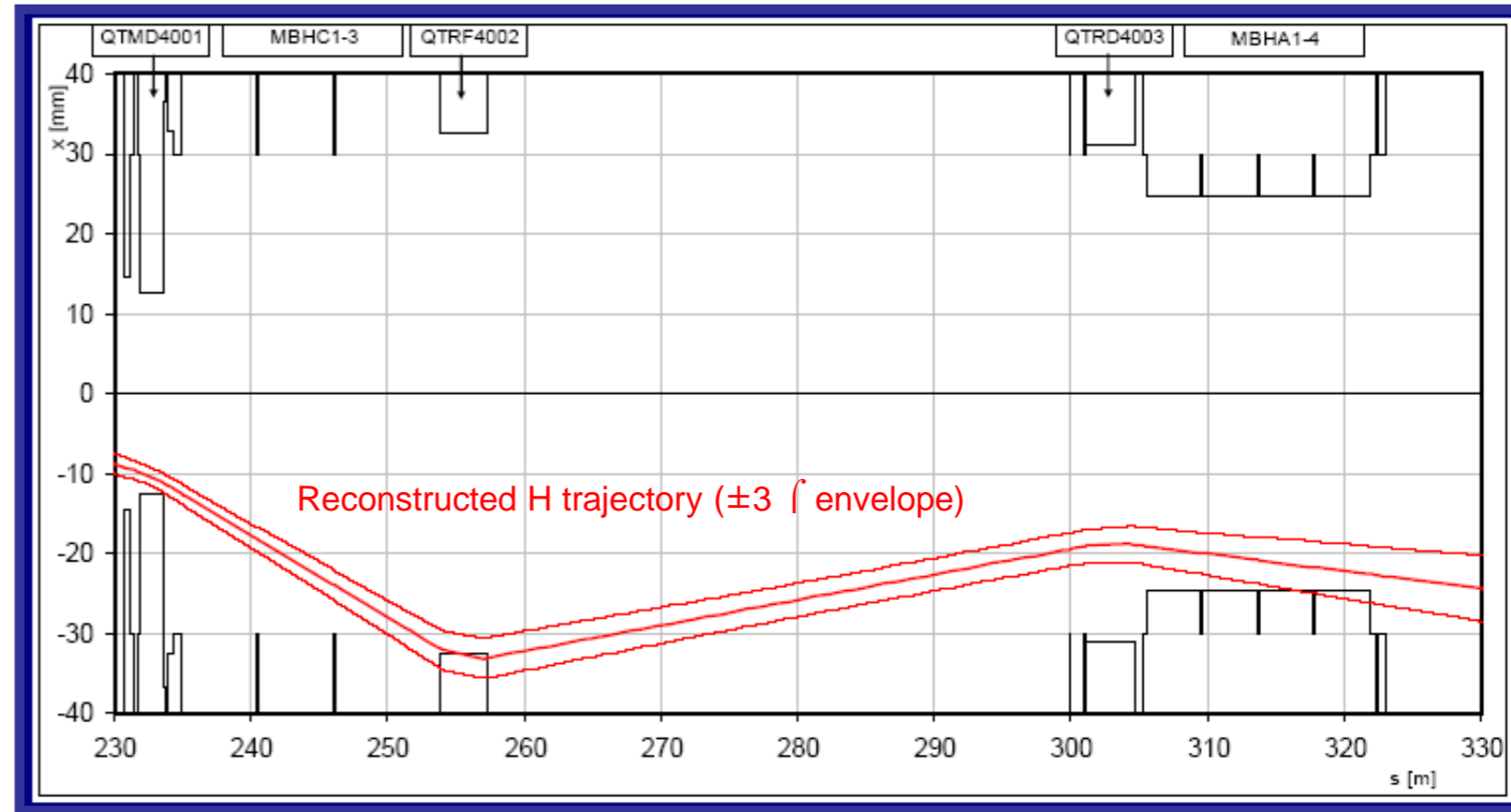
Background 2



Conclusions

- The limits to circular collider luminosity performance include:
 - Beta value at the IP
 - Beam-beam tune shift
 - Beam impedance and instabilities
 - Number of rf bunches
 - Synchrotron radiation (future machines)
 - Engineering viability
 - Funding and site availability

Failure in SPS during setting-up
 of LHC beam (25/10/04)
 Extraction septum supply tripped
 due to EMC from the beam
 In 11ms the field dropped 5%
 3.4×10^{13} p+ @ 450GeV were
 wrongly extracted onto aperture
 Chamber and magnet were
 damaged and had to be replaced



B. Goddard